



HAL
open science

Too hot or too disturbed? Temperatures more than hikers affect circadian activity of females in northern chamois

Lucie Thel, Mathieu Garel, Pascal Marchand, G. Bourgoïn, Anne Loison

► **To cite this version:**

Lucie Thel, Mathieu Garel, Pascal Marchand, G. Bourgoïn, Anne Loison. Too hot or too disturbed? Temperatures more than hikers affect circadian activity of females in northern chamois. *Animal Behaviour*, 2024, 10.1016/j.anbehav.2024.01.010 . hal-04488241

HAL Id: hal-04488241

<https://ofb.hal.science/hal-04488241v1>

Submitted on 4 Mar 2024

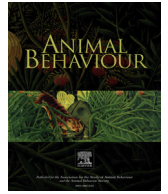
HAL is a multi-disciplinary open access archive for the deposit and dissemination of scientific research documents, whether they are published or not. The documents may come from teaching and research institutions in France or abroad, or from public or private research centers.

L'archive ouverte pluridisciplinaire **HAL**, est destinée au dépôt et à la diffusion de documents scientifiques de niveau recherche, publiés ou non, émanant des établissements d'enseignement et de recherche français ou étrangers, des laboratoires publics ou privés.



Contents lists available at ScienceDirect

Animal Behaviour

journal homepage: www.elsevier.com/locate/anbehav

Too hot or too disturbed? Temperatures more than hikers affect circadian activity of females in northern chamois

Lucie Thel ^{a, b, *}, Mathieu Garel ^c, Pascal Marchand ^d, Gilles Bourgoin ^{e, f}, Anne Loison ^a

^a Laboratoire d'Écologie Alpine, UMR 5553 (CNRS, Université Savoie Mont-Blanc), Savoie Technolac, Le Bourget-du-Lac, France

^b Laboratoire Évolution et Diversité Biologique, UMR 5174 (CNRS, Université Paul Sabatier), Toulouse, France

^c Office Français de la Biodiversité, Direction de la Recherche et de l'Appui Scientifique, Service Anthropisation et Fonctionnement des Écosystèmes Terrestres, Gières, France

^d Office Français de la Biodiversité, Direction de la Recherche et de l'Appui Scientifique, Service Anthropisation et Fonctionnement des Écosystèmes Terrestres, Juvignac, France

^e Univ Lyon, VetAgro Sup, Campus Vétérinaire de Lyon, Marcy l'Etoile, France

^f Univ Lyon, Université Lyon 1, CNRS, UMR 5558, Laboratoire de Biométrie et Biologie Évolutive (LBBE), Villeurbanne Cedex, France

ARTICLE INFO

Article history:

Received 1 March 2023

Initial acceptance 18 April 2023

Final acceptance 27 November 2023

Available online xxx

MS. number: 23-00110R

Keywords:

behavioural thermoregulation
circadian rhythm
climate warming
ecotourism
human disturbance
mountain ecosystem
nocturnality
recreational activity
Rupicapra rupicapra rupicapra

Recreational activities often result in a spatial and/or temporal activity shift in wildlife. With the concurrent development of outdoor activities and increase in temperatures due to climate change, mountain species face increasing pressures in terms of managing their activity pattern to limit both risk exposure and thermal discomfort. Using more than 15 years of long-term GPS and activity sensor data, we investigated how female northern chamois, *Rupicapra rupicapra rupicapra*, adjust their summer circadian activity to spatiotemporal variation in both temperatures and hikers' presence. Chamois' behaviour was more affected by high temperatures than by hikers' presence. During the hottest days, they shifted their activity peak earlier in the morning, were more active at night and during activity peaks, less active during daytime and had longer morning and evening peaks compared to the coldest days. Yet, total daily activity was only slightly different during the hottest days compared to the coldest days. Conversely, hikers' disturbance had weak effects on activity levels and on the timing of activity peaks. This is especially true for temporal disturbance (weekdays versus weekends and public holidays), possibly because most weekdays in summer fell during school holidays. Only during the hottest conditions, the morning activity peak was shorter and the evening peak longer in females living in the most exposed areas compared to females living in the least exposed areas. One possible explanation for the overall low effect of hikers' disturbance may be that behavioural changes buffering animals from high temperatures and hikers' presence (e.g. moving away from trails) allow them to just marginally modify their activity pattern. In the context of ongoing socioenvironmental changes, it is critical to conserve habitats providing thermal refuges against summer heat and protection from disturbance to mitigate potential detrimental consequences.

© 2024 The Author(s). Published by Elsevier Ltd on behalf of The Association for the Study of Animal Behaviour. This is an open access article under the CC BY-NC-ND license (<http://creativecommons.org/licenses/by-nc-nd/4.0/>).

A noticeable development and diversification of outdoor activities has been ongoing in the twenty-first century, especially in Western countries (Wheaton, 2010). While mountain ecosystems have been preserved until recently because of their low accessibility, they now face an increase in unaffiliated activities such as hiking, cross country skiing, trail running or climbing. These recreational activities are nonlethal, but humans can be consistently perceived as predators by wildlife (Frid & Dill, 2002), leading to a suite of negative physiological and behavioural responses (Arlettaz

et al., 2007; Larson et al., 2016; Marchand et al., 2014). The consequences of repeated reactions to disturbance can be detrimental for several fitness-related parameters (French et al., 2011; Phillips & Alldredge, 2000). This is particularly true in mountain ecosystems, where the diversification of human activities challenges animals all year long, during both the period of energy acquisition from spring to autumn and the period of energy loss during winter (Lindstedt & Boyce, 1985). This increased pressure on the animals is accompanied by environmental modifications, including climate change, that are particularly strong in the mountains (Pepin et al., 2015). Temperatures here are rising rapidly in all seasons, with consequences such as earlier springs and plant cycles, more frequent summer heatwaves and droughts, and decreased duration of snow

* Corresponding author.

E-mail address: lucie.mc.thel@gmail.com (L. Thel).

<https://doi.org/10.1016/j.anbehav.2024.01.010>

0003-3472/© 2024 The Author(s). Published by Elsevier Ltd on behalf of The Association for the Study of Animal Behaviour. This is an open access article under the CC BY-NC-ND license (<http://creativecommons.org/licenses/by-nc-nd/4.0/>).

Please cite this article in press as: Thel, L., et al., Too hot or too disturbed? Temperatures more than hikers affect circadian activity of females in northern chamois, *Animal Behaviour* (2024), <https://doi.org/10.1016/j.anbehav.2024.01.010>

cover associated with an increased risk of frost for plants (e.g. [Gobiet et al., 2014](#)). Mountain animals are therefore concomitantly facing two major changes, namely an increased disturbance level and climate change.

To reduce their exposure to human disturbance, animals can adjust their behaviour in terms of movements, habitat use and selection, and time devoted to their different activities (foraging, resting, vigilance and social interactions). When facing a disturbance perceived as a risk, animals can modify their activities (e.g. from foraging to vigilance; [Benoist et al., 2013](#); [Xu et al., 2021](#)), and move away temporarily or even permanently ([Rogala et al., 2011](#)). They can also modify their activity pattern by delaying activities, such as foraging in disturbed places, from high- to low-risk periods ([Bonnot et al., 2013](#)). The benefits of such responses have been explained within the 'risk allocation hypothesis' framework ([Lima & Bednekoff, 1999](#)): the costs of lost opportunities to forage during risky periods could be reduced if, for instance, animals transfer some of their diurnal activity to night-time when human activities stop (e.g. [Bonnot et al., 2020](#); [Marchand et al., 2014](#)). However, activity patterns are regulated, such as the critical foraging/rumination succession in ruminants ([Hamel & Côté, 2008](#)). Any forced modification of these patterns can negatively impact the fitness of individuals, for instance via an increased encounter risk with predators ([Lesmerises et al., 2018](#)) or mismatches in interactions with conspecifics ([Greives et al., 2015](#)).

At the same time, animals need to deal with climatic constraints, and behavioural thermoregulation is among the most important mechanisms to avoid thermal stress. Indeed, temperatures influence space use (arctic ground squirrels, *Spermophilus parryii*, [Long et al., 2005](#); Mediterranean mouflon, *Ovis gmelini musimon* x *Ovis* sp., [Marchand et al., 2015](#)) and activity budgets (Japanese monkeys, *Macaca fuscata*, [Watanuki & Nakayama, 1993](#)), with animals having to trade between foraging and thermal cover to limit thermoregulatory costs while maintaining their energy balance ([van Beest & Milner, 2013](#)). In the same way as they do when avoiding human disturbance, animals can shift their activity peaks earlier in the morning and later in the evening, and increase their nocturnal activity during the hottest summer days ([Bourgoin et al., 2008, 2011](#)). However, in temperate ecosystems, the night can be significantly shorter than the day during summer, and riskier when nocturnal predators are present. Thus, the transfer of the diurnal activity to night-time does not necessarily allow animals to fully compensate for the loss of foraging opportunities during the day and may, for instance, have consequences for mass gain ([Garel et al., 2004](#)) or predation risk ([Gehr et al., 2018](#)). These results highlight the importance of investigating full daily cycles to get a comprehensive picture of how animals may adjust their behaviour in the face of human-induced environmental changes ([Marchand et al., 2014, 2015](#)).

Moreover, ongoing climate change and expansion of human activities in mountain ecosystems are also ultimately connected. An extended summer season or more frequent summer heatwaves in valleys may, for instance, increase the presence of humans in the mountains. Although predicting tourist numbers under scenarios of climate change is probably not straightforward ([Beniston, 2003](#)), this raises questions on animal responses to these interrelated human-induced environmental changes and on their potential cumulative or even multiplicative consequences for populations in terms of both immediate and compensatory responses ([Schmeller et al., 2022](#)). One critical challenge is therefore to understand whether the behavioural mechanisms used by animals to buffer against increasing temperatures may also provide an advantage against human presence or vice versa.

Here, we used GPS monitoring of 62 female northern chamois, *Rupicapra rupicapra rupicapra*, to investigate at a fine scale their

behavioural responses to temporal and spatial stressors during summer, through the study of their activity pattern. Specifically, we assessed the day-to-day variation in temperatures and hikers' presence for each chamois. We also computed an individual-specific index of spatial disturbance, combining data on the density of hiking trails in the summer home range of each chamois and the presence of hikers in each trail section. A diversity of activity metrics (e.g. daily activity levels, timing of activity peaks, length of activity peaks) allowed us to investigate the relative contribution of spatiotemporal variation in both temperatures and human disturbance to changes in circadian activity patterns of female chamois in summer. We expected chamois to adjust their circadian activity pattern by avoiding being active during the hottest hours during the hottest days and during the most disturbed (i.e. weekends and public holidays) versus less disturbed (i.e. weekdays) days, with a compensation of daytime activity loss at night. As individuals were exposed to variable levels of disturbance depending on the location of their summer home range, we also expected more marked responses in chamois that were the most exposed to hikers' disturbance.

METHODS

Study Site and Species

The study took place in the National Game and Hunting Reserve of Les Bauges massif (NGHRB), a protected area in the French Alps (45°40'N, 6°13'E; 900 to 2200 m above sea level; 5200 ha). The Bauges massif is made of limestone, with cold (mean annual temperature: 9.6 °C; snow cover from November to April above 1600 m, [Duparc et al., 2013](#)) and wet (mean cumulative annual rainfall: 1600 mm, [Duparc et al., 2013](#)) climatic conditions (see [Appendix Fig. A1](#) for details about summer temperatures). Fifty-six per cent of the area is covered by forests (treeline around 1500 m above sea level in the study site), dominated by beech, *Fagus sylvatica*, and fir, *Abies alba*, 36% by grasslands and 8% by rocks ([Lopez, 2001](#)). This heterogeneous environment leads to a huge diversity of habitats and landscapes that attracts numerous tourists every year (> 37 000, most of them during summer; 1.1 million and 0.5 million overnight stays in summer and winter, respectively, in 2014, [Cloud Parc des Bauges, 2014](#)). All alpine grasslands are crossed by a network of trails where nearly all hikers are concentrated due to the NGHRB restrictions, exposing chamois to a very localized disturbance ([Courbin et al., 2022](#)). Other recreational activities (e.g. paragliding) occur in the study site during summer, but far less frequently than hiking.

Most adult female chamois annually give birth to one young in late May. During summer, they form groups with other females, kids and yearlings that share and keep the same home range from year to year ([Loison et al., 1999](#)). Females play a major role in the demography of the population, particularly through fecundity and survival of young females ([Gaillard et al., 2000](#)). Chamois had no natural predators in the study area during the study period, except golden eagles, *Aquila chrysaetos*, and red foxes, *Vulpes vulpes*, which may occasionally predate newborn and injured animals. The presence of very few nonresident wolves, *Canis lupus*, has been noticed in some years ([Loupfrance, 2021](#)). Hunting performed by small groups of three to four hunters occurs in the NGHRB from the beginning of September to the end of February ([Courbin et al., 2022](#)), with chamois being the main target species (ca. 100 chamois harvested per year on average, i.e. <12% of the chamois population in the area and ca. 70% of the total number of ungulates harvested), in addition to Mediterranean mouflon (ca. 20%), roe deer, *Capreolus capreolus* (ca. 4%), wild boar, *Sus scrofa* (ca. 4%) and red deer, *Cervus elaphus* (ca. 2%; see [Courbin et al., 2022](#) for details).

Data Collection

We focused on summers from 2004 to 2020, between 15 June and 7 September. This period includes days during and outside the French summer break which starts in early July, but excludes the hunting season which ranges from the first weekend of September to the end of February, so that chamois were exclusively exposed to hikers' disturbance during our study period. The study period is critical for female chamois because it follows the birth season and is characterized by high energy requirements for lactation and storage of fat reserves for winter survival (Clutton-Brock et al., 1989; Richard et al., 2017), so that any disturbance during this period could be particularly detrimental.

We trapped 62 adult female chamois >2 years old during summer in four alpine grasslands near two trails used a lot by hikers (Armenaz and Dent des Portes). As deployment/recovery of GPS collars occurred during summer, chamois' locations were not necessarily recorded daily throughout the study period. Only chamois ($N = 62$) for which we could reliably estimate the summer home range (95% kernel contour using the 'adehabitatHR' package; Wornton, 1989; Calenge, 2006) were included in the study, i.e. chamois with GPS locations available during at least two-thirds of the summer period, corresponding to 56 days in total. Animal motion was recorded every 5 min by two perpendicular captive-balls in the GPS collars monitoring neck movements (0: no movement; 255: highly mobile) and the proportion of time the animal was head down. We categorized each chamois as 'active' (i.e. feeding, standing, travelling or doing other activities such as interactions or scratching) or 'inactive' (i.e. sleeping, ruminating or resting) for every 5 min period using the discriminant model developed by Bourgoin et al. (2011; see also Darmon et al., 2014). From these animals, we obtained a total of 4464 complete days of activity records in summer ($N = 131$ chamois-years, 1 285 632 bouts of 5 min activity measurements in total). The activity of each chamois was monitored during 18–129 days in total, corresponding to 11–49 days (mean \pm SD = 34 ± 10 days, median [Q1; Q3] = 36 [26; 42] days) during a single summer period for a given chamois (Appendix Figs. A2 and A3).

Ethical Note

We trapped chamois using falling nets baited with salt licks. Although captures occurred during the birth and weaning period, females generally avoided drop nets (positioned on flat areas) when juveniles were particularly vulnerable (resulting in females using very steep slopes as an antipredator strategy). During the weaning period, chamois form nursery groups and kids are not always closely associated with their mother, so temporary separation for periods longer than those resulting from capture/handling occur naturally in this species (Ruckstuhl & Ingold, 1998). The drop nets were triggered manually by an observer located a few hundred metres away from the nets, preventing nontarget captures, and chamois were handled immediately after the capture by several experienced people coordinated by the Office Français de la Biodiversité. As soon as an animal was handled, it was restrained with the eyes covered to reduce stress and legs tied together to avoid injuries. An average of three individuals were captured at the same time and this number was adjusted according to the number of handlers to limit the waiting time for each chamois. All efforts were made to minimize the handling time (approximately 10–15 min per individual) to release animals on site as soon as possible. Juveniles and mothers were released at the same time to prevent separation. As part of long-term capture-marking-recapture monitoring, recaptures were not avoided, although unmarked individuals were targeted when present. Since 2003, 916 individuals have been captured or recaptured of which five died (i.e. 0.55% of

the individuals handled). When necessary, animals were killed by shooting a bullet in the head or by destruction of the nervous system by percussion of the cranial cavity (matador), following the ethical and legal ways recommended for large mammals after major injuries (Department of Parks and Wildlife, 2013; Legifrance, 2023). All captures, handling and sampling were conducted according to the appropriate national laws for animal welfare, following the ethical conditions detailed in the specific accreditations delivered by the Préfecture de Paris (prefectorial decree n°2009–014) in agreement with the French environmental code (Art. R421–15 to 421–31 and R422–92 to 422–94–1).

Females were equipped with GPS collars Lotek 3300S (Lotek Engineering Inc., Carp, Ontario, Canada). The GPS collars weighed < 450 g and were deployed only on individuals > 20 kg judged to be fully healthy so that it never exceeded 2.5% of the body mass of the equipped animal (average weight of females fitted with GPS collar = 30 kg, so 1.5% of individuals' body mass on average). To allow for possible seasonal variation in neck circumference, we left a gap of ca. 3 cm between the GPS collar and the animal's neck while making sure that the collar would not rotate. We retrieved the collar using a remote drop-off system triggered manually or automatically (TRRD or TRD drop-offs, respectively; Lotek Engineering Inc., Carp, Ontario, Canada) at the end of the monitoring of the individuals, nearly 1 year after deployment. From repeated observations of GPS-collared individuals throughout the year as part of long-term capture-mark-recapture monitoring of this population, we have no indication that GPS collars cause changes in behaviour compared to other nonequipped individuals. Similarly, we did not detect any adverse effects linked to the wearing of the collars in terms of injury or reproductive activity.

Estimation of Variables of Interest

We assessed daily characteristics (see below) from 0139 hours UTC of day d to 0139 hours UTC of day $d+1$. This allowed us to explore potential compensation processes during the night following the day of interest. We selected the starting hour in accordance with the median value of the beginning of the crepuscular period in the morning during our study period. We used a microclimate model that integrates ERA5 hourly weather data produced by the Copernicus Climate Change service at ECMWF (spatial resolution 30 km \times 30 km) and a digital elevation model (30 m) for down-scaling atmospheric data at the population scale (micro_era5 function in the 'NicheMapR' package; Kearney et al., 2020; Kearney & Porter, 2017; Maclean et al., 2019). This allowed us to overcome the issue of incomplete weather data collected in the valley by the local weather station and to get standardized temperatures within the population range over the study period. Mean daily temperatures were predicted from this model at 1 m high on flat terrain for a spatial location and elevation (1950 m above sea level) corresponding to the centroid of all chamois' GPS locations. We explored the effect of temperatures on female chamois' activity through a categorical variable with two levels defined according to the quantiles of the mean daily temperature distribution. Days with mean temperature \leq 25% quantile (i.e. 10.8 °C) were considered as cold days and days with mean temperature > 75% quantile (i.e. 15.5 °C) were considered as hot days. Cold days experienced by chamois ranged between 3.4 °C and 10.8 °C (mean \pm SD = 8.6 ± 1.6 °C, median [Q1; Q3] = 8.9 [7.6; 10.0] °C), while hot days ranged between 15.5 °C and 20.9 °C (mean \pm SD = 17.2 ± 1.2 °C, median [Q1; Q3] = 17.1 [16.2; 18.1] °C; see also Appendix Fig. A1).

Temporal disturbance associated with hiking was defined as a categorical variable with two levels. Weekends and public holidays, i.e. vacation days such as National Day, were considered as the most disturbed days and days between Monday and Friday, other than

public holidays, were considered as the least disturbed days. To check for the reliability of these two categories in the field, we compared the daily attendance of hikers (number of hikers recorded on the trail) between 0000 hours UTC and 2359 hours UTC and the hour of first arrival for both temporal disturbance levels using an eco-counter (PYRO sensor Eco-Compteur, www.eco-compteur.com; 90 cm above ground) located on Armenaz trail (45°37'18.60" N, 6°13'2.53" E) and present during two consecutive summers (2016 and 2017). Our study period encompassed 189 weekends and public holidays and 440 weekdays. During the same period of the year in 2016 and 2017, there were almost twice as many hikers on the trails during weekends and public holidays (mean \pm SD = 74 \pm 53 hikers, median [Q1; Q3] = 73 [39; 106] hikers) than during weekdays (mean = 47 \pm 34 hikers, median = 40 [25; 73] hikers; Mann–Whitney *U* test: $U = 2558$, $N_1 = 41$, $N_2 = 96$, $P = 0.006$). Hikers also tended to arrive 60 min earlier during weekends and public holidays (mean \pm SD = 0744 hours UTC \pm 120 min, median [Q1; Q3] = 0700 [0700; 0900] hours UTC) compared to weekdays (mean \pm SD = 0813 hours UTC \pm 180 min, median [Q1; Q3] = 0800 [0700; 0900] hours UTC), although this difference was not statistically significant (Mann–Whitney *U* test: $U = 1559$, $N_1 = 40$, $N_2 = 91$, $P = 0.188$; see [Appendix Figs. A4 and A5](#)). We also conducted a Mann–Whitney *U* test to assess whether hikers' attendance was affected by temperatures (see [Results](#)). Finally, we ran supplementary analyses considering three contrasting temporal disturbance categories, namely (1) weekdays during the school period, (2) weekdays during the summer break and (3) weekends and public holidays (see [Appendix, Analyses Using Three Levels of Temporal Disturbance](#)). These supplementary analyses provided very similar results to the original analysis contrasting two levels of disturbance (i.e. weekdays versus weekends/public holidays).

Potential spatial exposure to hikers' disturbance was evaluated within the home range of each female chamois using attendance rates of the trails extracted from Strava Global Heatmap ([Strava, 2022](https://www.strava.com); www.strava.com, download date: 9 March 2022, data from the two previous years; see also [Courbin et al., 2022](#) for a similar approach on this study site). Strava heatmap provides a value ranging from 0 for no attendance to 255 for the highest attendance for each pixel (pixel size = 25 m \times 25 m) and is a good proxy of relative human attendance (see [Appendix, Comparison Between Strava Map and GPS Data](#); [Thorsen et al., 2022](#); [Venter et al., 2023](#)). The lowest and highest values recorded for a trail pixel in our study site were 51 and 255, respectively. We thus defined attendance classes according to the quantiles of the [51; 255] distribution in order to cover trail pixels exclusively: 1 = [51; 119] (between 0% and 33% quantile, low attendance); 2 = [119; 187] (between 33% and 66% quantiles, intermediate attendance); 3 = [187; 255] (between 66% and 100% quantiles, high attendance). We counted trail pixels of each class in a given home range and multiplied this number by the corresponding class value (i.e. 1, 2 or 3) to give a different weight to each trail pixel according to its attendance level. We then summed these values for a given home range and normalized the total by dividing it by the home range surface to obtain our spatial disturbance index. We used the median spatial disturbance index (i.e. 0.00577) as a threshold to discriminate between most exposed chamois and least exposed chamois (see [Appendix Fig. A13](#)).

As our study period ran over almost 3 months, daylength, which is known to influence chamois' activity ([Brivio et al., 2016](#); [Fattorini et al., 2019](#)), varied widely. We accounted for this effect by including daylength in our models (for a similar approach, see [Semenzato et al., 2021](#)). We evaluated daylength as the time elapsed between dawn and dusk using the 'crepuscule' function in 'maptools' package ([Bivand & Lewin-Koh, 2022](#); reference angle of the sun below the horizon = 6°, i.e. civil dawn/dusk).

Statistical Analyses

We first modelled the daily activity of chamois as a series of values of either 0 (inactive) or 1 (active) for each 5 min bout using a generalized additive mixed model (GAMM) with a binomial distribution of errors ('mgcv' package, [Wood, 2011, 2017](#); [Wood et al., 2015](#)). We included three fixed effects in the model: (1) time of day, i.e. exact time every 5 min and (2) daylength, as well as their interaction (using the 'ti' function dedicated to interactions in generalized additive models), as continuous variables with a cyclic cubic regression spline as smoothing basis for terms including daylength exclusively; (3) a synthesis eight-level categorical variable representing all possible combinations between temperatures classes, levels of temporal disturbance and of spatial disturbance, in interaction with the time of day (using the by argument of the 's' function in the implementation of the GAMM). The levels were ordered, with the reference level corresponding to a chamois living in the least exposed areas during cold weather and on weekdays. The interaction between daylength and time of day allowed us to account for the fact that the activity pattern is determined by the timing of sunrise and sunset ([Ashby, 1972](#); [Cederlund, 1989](#)), which varies widely according to the date. We defined the unique annual id-year ID of each chamois as a random effect (using the parameter 're' for the bs argument in the 's' function in the implementation of the GAMM) to account for interindividual variations in circadian activity pattern (see [Appendix, Interindividual Variability in the Circadian Activity Pattern in Chamois](#)). We set the maximum number of knots for the smoothing functions to 24. We also fitted the null model, which was similar to the model described above but excluded the temperatures-disturbance variable, for comparison purposes. All details about model fitting are provided in the [Appendix, Fitting a Generalized Additive Mixed Model to Describe Activity Patterns](#).

We used the predictions of the model to investigate the effect of temperatures and hikers' disturbance on several activity metrics derived from this model (described below). We controlled for the effect of daylength by fixing it to the median of the complete data set (i.e. 963 min) when predicting chamois' activity for each level of the temperatures-disturbance combination. We derived the total, diurnal, nocturnal and both morning and evening crepuscular activity as the area under the activity curve ('AUC' function in the 'DescTools' package; [Signorell, 2023](#)) for each level of the temperatures-disturbance variable. We defined daytime as the period elapsed between 120 min after dawn and 120 min before dusk, and night-time as the period elapsed between 120 min after dusk and 120 min before dawn (see [Bonnot et al., 2020](#) for a similar approach). Crepuscular periods corresponded to the remaining periods between daytime and night-time. We assessed the timing of the morning and evening activity peaks as the time when the highest activity probability occurs in the morning and the evening, respectively. We finally evaluated morning and evening peak duration as the period elapsed between the first time when the activity probability reached 0.5 and the last time before it went below 0.5 for both activity peaks (for a similar approach see [Bourgoin et al., 2011](#)). The percentage of variation between two situations was calculated as $100 \times (\text{value}_2 - \text{value}_1) / \text{value}_1$. We performed all analyses using the R software ([R Core Development Team 2022](#), version R 4.3.0).

RESULTS

Model Adjustment

The full generalized additive mixed model (AIC = 1 578 865, explained deviance = 11.4%, adjusted $R^2 = 0.149$) was better than

the null model including time of day and daylength effects and excluding the temperatures-disturbance variable (AIC = 1 591 999, explained deviance = 10.7%, adjusted $R^2 = 0.140$; see [Appendix, Fitting a Generalized Additive Mixed Model to Describe Activity Patterns](#)) to predict activity pattern ([Fig. 1](#)). All smooth terms (fixed and random effects) were significant ($P < 0.001$).

Temperatures

Whatever the level of spatial exposure and temporal disturbance, chamois increased their total activity during hot days compared to cold days, by 5% on average ([Fig. 2](#)). This change corresponded to an average increase of 22% in the nocturnal activity and a decrease of 10% in the diurnal activity, from cold to hot days ([Fig. 2](#)). In addition, crepuscular activity increased from cold to hot days by more than 31% in the morning and 18% in the evening on average ([Fig. 2](#)). Chamois also advanced their morning peak by 17 min from cold to hot days, and they only slightly delayed their evening peak by 5 min on average ([Fig. 3](#)). Morning and evening peaks lasted longer during hot compared to cold days being almost 60 min and 20 min, respectively, on average ([Fig. 4](#)). Chamois maintained a certain amount of activity in the middle of the day during cold days (i.e. above 40%), whereas the activity probability at the same hours was much lower and more variable during hot days ([Fig. 1](#)).

Hikers' Disturbance

All the summer home ranges used by the studied chamois were crossed by at least one hiking trail. Our spatial disturbance index ranged between 0.00317 and 0.02912 (mean \pm SD = 0.00699

± 0.00433 , median [Q1; Q3] = 0.00577 [0.00458; 0.00774]), with only seven chamois above 0.01000 (see [Appendix Fig. A13](#)). In 2016 and 2017, hikers' attendance was significantly higher when temperatures were high (cold days: mean \pm SD = 45 \pm 56 hikers, median [Q1; Q3] = 21 [7; 63] hikers; hot days: mean \pm SD = 62 \pm 37 hikers, median [Q1; Q3] = 54 [31; 84] hikers; Mann–Whitney U test: $U = 333$, $N_1 = 23$, $N_2 = 48$, $P = 0.007$).

Overall, the effect of temperature was much more pronounced than the effect of disturbance and very few differences between the general activity patterns were discernible between the different levels of hikers' disturbance for a given temperature ([Figs. 1 and 5](#)). Our analyses revealed very similar amounts of total, diurnal, nocturnal and crepuscular activity whatever the level of disturbance ([Fig. 2](#)). Similarly, the changes in terms of timing of the activity peaks according to hikers' disturbance was not biologically significant (< 7 min; [Fig. 3](#)). Only the duration of the activity peaks during hot days (also the most disturbed days) was affected by the spatial exposure to hikers' disturbance ([Fig. 4](#)) with the morning peak being 46 min shorter and the evening peak 20 min longer for chamois living in the most exposed areas compared to chamois living in the least exposed areas. In contrast, temporal disturbance (i.e. weekdays which are the least disturbed days versus weekends and public holidays which are the most disturbed days) had almost no effect on the length of activity peaks ([Fig. 4](#)).

DISCUSSION

Our objective was to determine and compare the relative contribution of summer temperatures and hikers' disturbance on the activity pattern of females of a mountain ungulate, the northern chamois. During hot days, chamois adjusted their circadian activity

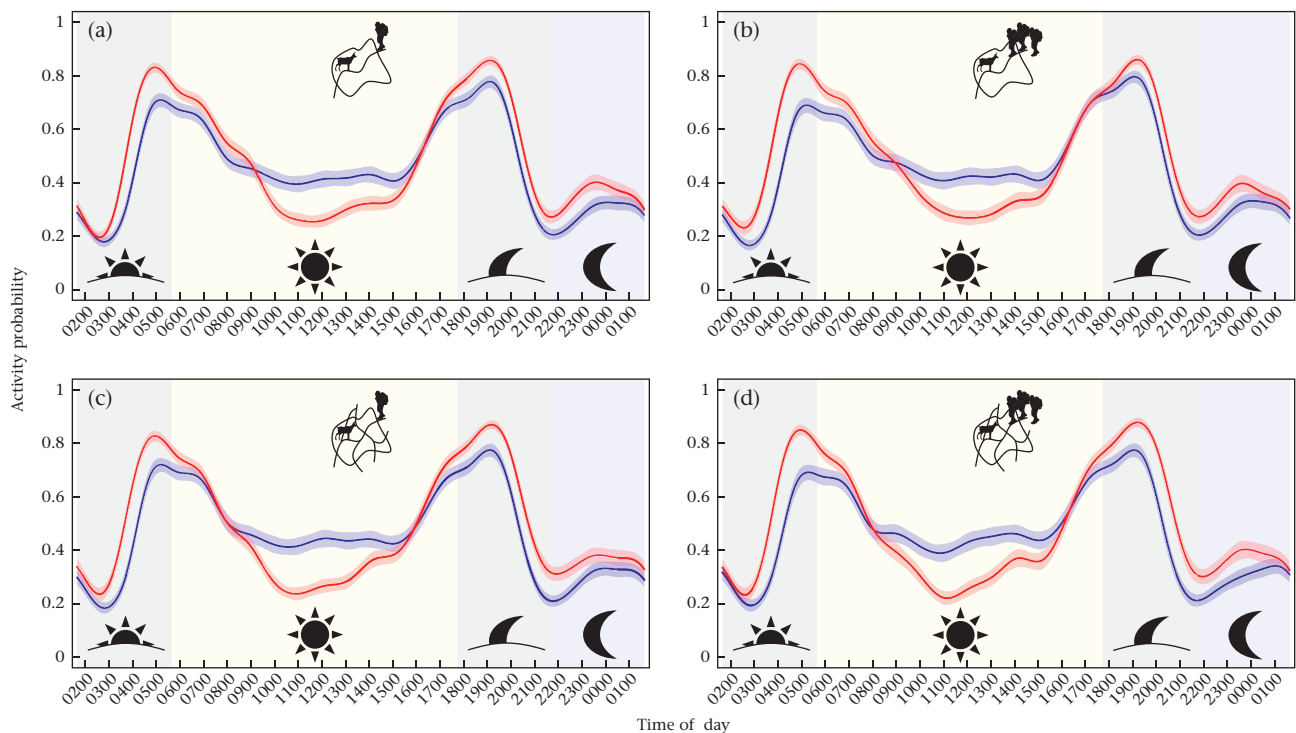


Figure 1. Predicted circadian activity patterns (activity ranges between 0 for inactivity to 1 for full-time activity) of 62 female northern chamois in the National Game and Hunting Reserve of Les Bauges massif, in summer (15 June to 7 September 2004–2020), according to temperatures (blue: cold days; red: hot days) and human disturbance: (a) chamois living in the least exposed areas during weekdays; (b) chamois living in the least exposed areas during weekends and public holidays; (c) chamois living in the most exposed areas during weekdays; (d) chamois living in the most exposed areas during weekends and public holidays (see also pictograms in the figure). Solid lines represent predicted values from the model and shaded areas around the curves represent 95% confidence intervals. Background shades represent the periods used to calculate the area under the activity curve for morning and evening crepuscules (grey), daytime (yellow) and night-time (blue; see also pictograms in the figure). Time of day represents hours in Coordinated Universal Time (UTC).

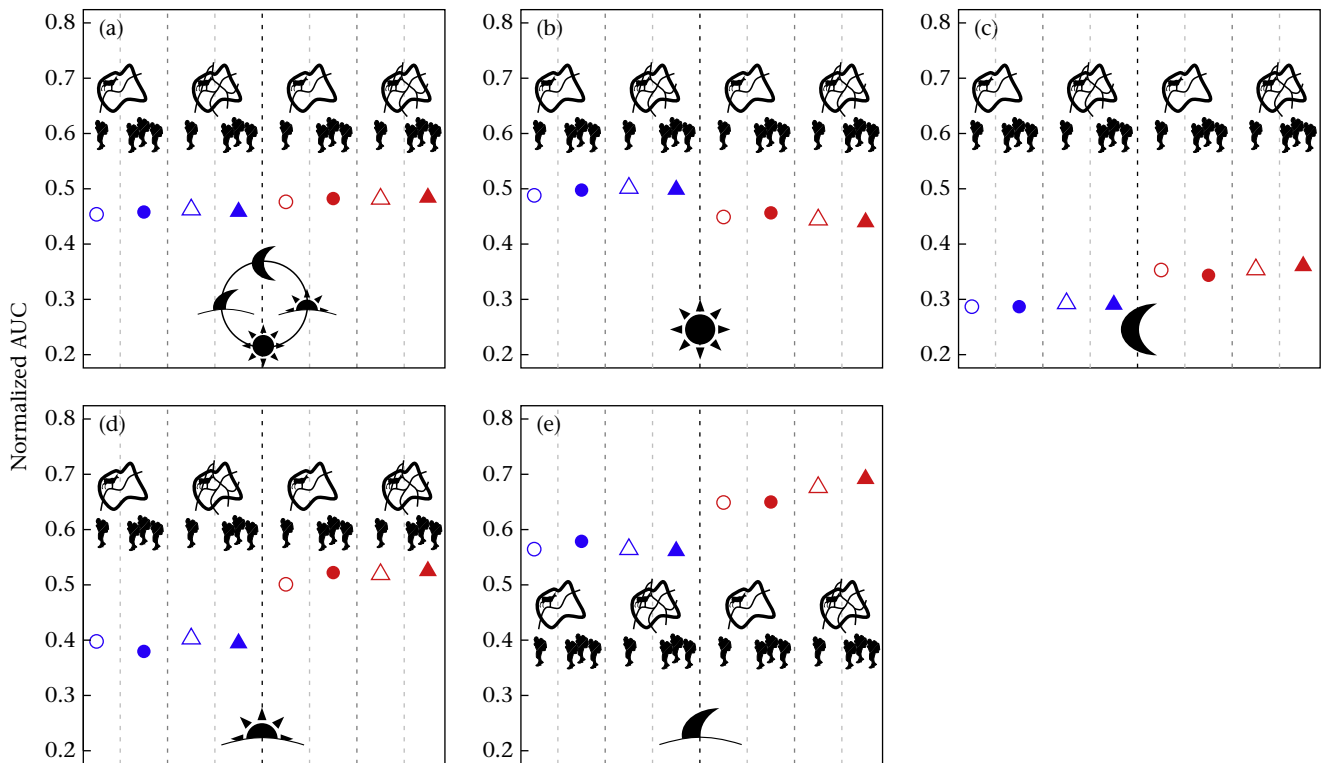


Figure 2. Area under curve (AUC, unitless) normalized by the duration of each period for each situation of interest, namely a combination of different levels of temperatures (blue: cold days; red: hot days), spatial disturbance (dot: low exposure; triangle: high exposure) and temporal disturbance (empty symbol: weekdays; filled symbol: weekends and public holidays; see also pictograms in the figure): (a) total (1440 min), (b) diurnal (724.8 min), (c) nocturnal (235.2 min), (d) morning crepuscular (240 min) and (e) evening crepuscular (240 min) activity (see also pictograms in the figure). AUC are calculated from predicted circadian activity patterns of northern chamois in the National Game and Hunting Reserve of Les Bauges massif, in summer (15 June to 7 September 2004–2020). We defined 'diurnal' as the period elapsed between 120 min after dawn and 120 min before dusk, 'nocturnal' as the period elapsed between 120 min after dusk and 120 min before dawn and 'crepuscule' as the remaining periods in the morning and evening (see text for details). Dark and light dashed lines are a visual aid to separate the different levels of the temperatures - disturbance variable.

by shifting their activity peak earlier in the morning and by increasing its duration. As expected during hot days, they also increased their nocturnal and crepuscular activity while being less active during the hottest hours of the day. These behavioural adjustments allowed females to maintain a similar level of total daily activity between cold and hot days. On the other hand, and contrary

to our expectations, chamois only rarely adjusted their activity pattern according to hikers' disturbance (see also [Appendix, Analyses Using Three Levels of Temporal Disturbance](#)). Only during hot days (also the most disturbed days) did we observe a marked decrease in the duration of the morning activity peak and a slight increase in the duration of the evening activity peak for

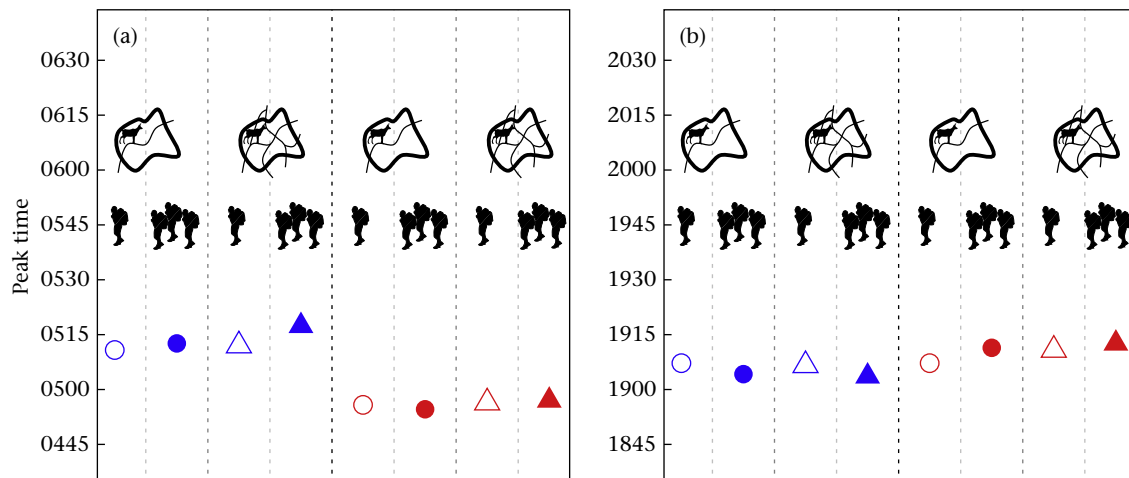


Figure 3. Timing of the activity peak (TAP, time of day when the activity peaks happen, i.e. the time when the highest probability of activity occurs) for each situation of interest, namely a combination of different levels of temperatures (blue: cold days; red: hot days), spatial disturbance (dot: low exposure; triangle: high exposure) and temporal disturbance (empty symbol: weekdays; filled symbol: weekends and public holidays; see also pictograms in the figure): (a) morning peak and (b) evening peak. TAP are calculated from predicted circadian activity patterns of northern chamois in the National Game and Hunting Reserve of Les Bauges massif, in summer (15 June to 7 September 2004–2020). Note the change of interval on the y axis between (a) and (b), although the scale stays the same. Dark and light dashed lines are a visual aid to separate the different levels of the temperatures - disturbance variable.

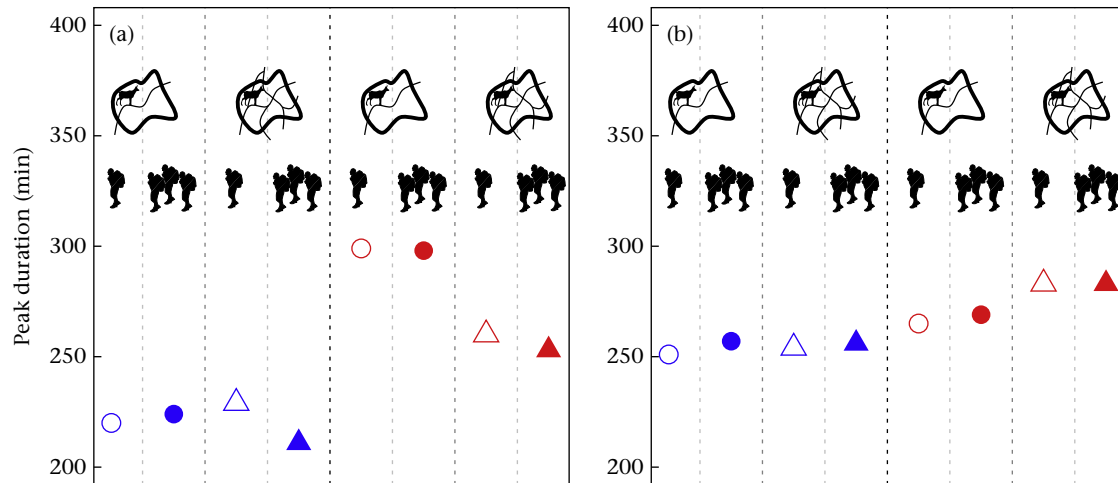


Figure 4. Peak duration (PD, min) for each situation of interest, namely a combination of different levels of temperatures (blue: cold days; red: hot days), spatial disturbance (dot: low exposure; triangle: high exposure) and temporal disturbance (empty symbol: weekdays; filled symbol: weekends and public holidays; see also pictograms in the figure): (a) morning and (b) evening peak. PD are calculated from predicted circadian activity patterns of northern chamois, National Game and Hunting Reserve of Les Bauges massif, in summer (15 June to 7 September 2004–2020). Dark and light dashed lines are a visual aid to separate the different levels of the temperatures - disturbance variable.

chamois living in the most exposed areas compared to chamois living in the least exposed areas, as well as a slight increase in the nocturnal and crepuscular activity at the expense of the diurnal activity. Temporal disturbance (i.e. weekends and public holidays versus weekdays) had almost no effect on chamois' activity peaks.

Although chamois seem to be less sensitive to high temperatures than other alpine ungulate species (see Darmon et al., 2014 for a comparison between chamois and mouflon; see also Semenzato et al., 2021 for Alpine ibex), their faecal glucocorticoid metabolite concentration increases during drought conditions in summer (Anderwald et al., 2021), as well as the time they spend in thermal refuges during hot days (Malagnino, 2022). This may explain why chamois responded much more strongly to temperatures than to hikers' disturbance. Moreover, in our study site, hikers' attendance was significantly higher when temperatures were high. Hence, the behavioural changes made to buffer chamois from high temperatures may also protect them from hikers' disturbance, as both factors were related. Animals have to face several stressors (e.g. human disturbance, predation, high temperatures) and they cannot indefinitely adjust their behavioural response as stressors accumulate (Benoist et al., 2013). For example, during cooler periods,

yellow-blotched sawback, *Graptemys flavimaculata*, tend to increase their basking time even when disturbed by humans, presumably because low temperatures force them to favour thermoregulation at the expense of risk avoidance (Selman et al., 2013). Moreover, most of the response to human disturbance in our chamois population seemed to happen at the spatial level rather than the temporal level (Fig. 4a) and only during the hot days (when hikers' attendance was at its highest level), causing a significant decline in the duration of the morning activity peak in chamois living in the most versus least exposed areas.

Recent studies have provided evidence of a non-negligible nocturnal activity peak in chamois (Carnevali et al., 2016). Here, we also highlighted that nocturnal activity significantly increased while diurnal activity decreased during hot days, confirming the influence of high temperatures on chamois' activity. As in numerous other species, chamois decreased their diurnal activity when exposed to high temperatures and/or human disturbance and attempted to compensate for the activity loss when they were absent (e.g. later in the day or at night, Gaynor et al., 2018). Similarly, the lynx, *Lynx lynx*, responds spatially to disturbance by using the areas located close to the trails inside its home range less

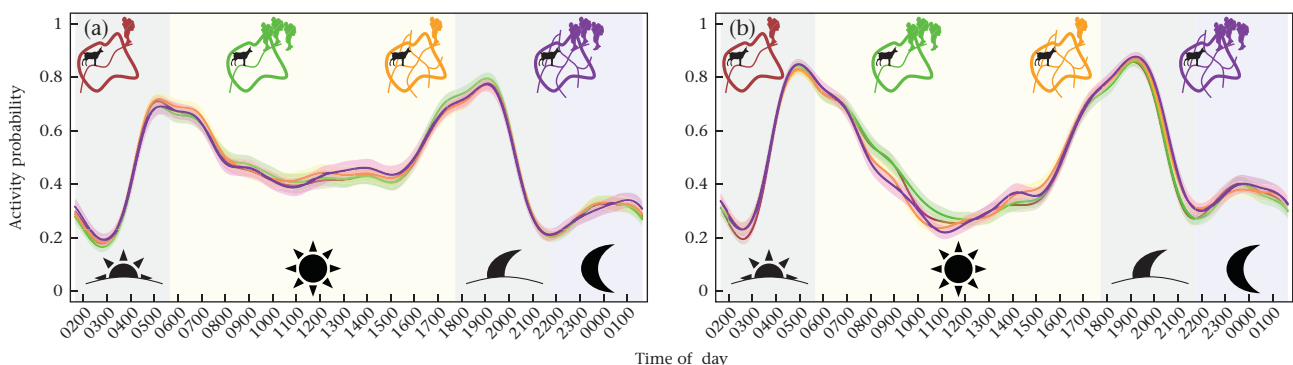


Figure 5. Predicted circadian activity patterns (activity ranges between 0 for inactivity and 1 for full-time activity) of female northern chamois in the National Game and Hunting Reserve of Les Bauges massif, in summer (15 June to 7 September 2004–2020), according to temperatures and human disturbance: (a) cold days and (b) hot days. In both (a) and (b), brown represents chamois living in the least exposed areas during weekdays; green represents chamois living in the least exposed areas during weekends and public holidays; orange represents chamois living in the most exposed areas during weekdays; purple represents chamois living in the most exposed areas during weekends and public holidays (see also pictograms in the figure). Solid lines represent predicted values from the model and shaded areas around the curves represent 95% confidence intervals. Background shades represent the periods used to calculate the area under the curve for morning and evening crepuscules (grey), daytime (yellow) and night-time (blue; see also pictograms in the figure). Time of day represents hours in Coordinated Universal Time (UTC).

frequently during the day than at night (Thorsen et al., 2022). However, an increase in nocturnal activity could expose individuals to other threats, such as nocturnal predators (Bonnot et al., 2020). This is particularly true in our study site with the progressive return of wolves recorded since 2020. Large herbivores may face the difficult challenge of avoiding being exposed to high temperatures while limiting their exposure to human disturbance, but without shifting completely their activity at night because of predation risk. The shift to more crepuscular activity observed in this study could be an answer to this trade-off.

Interestingly and in contrast with Brivio et al. (2016) and Grignolio et al. (2018) in another chamois population, total activity was slightly higher (+5%) during hot than cold days in our chamois population. Such a finding is not necessarily surprising as other studies have found similar results (in the same population, Malagnino, 2022; in Alpine ibex maintaining a constant activity both during cold and hot days, Semenzato et al., 2021). In addition, this does not necessarily translate into an increase in feeding behaviour but might be because chamois display diel migrations between refuges and feeding spots (Courbin et al., 2022), particularly if both habitats are distant or heterogeneous. With the increasing temperatures in summer, chamois could be forced to commute more frequently or move further to find shelter from the heat while maintaining the same level of feeding activity, eventually leading to the overall increase observed. Unfortunately, our data provide no clue about the nature of the behaviours displayed (i.e. foraging, moving or social behaviours) and we cannot ascertain whether this rise in activity effectively corresponds to spatial displacement. Likewise, the pigmy rabbit, *Brachylagus idahoensis*, selects significantly more ground depressions as refuges during summer to mitigate the adverse effects of high temperatures (Milling et al., 2017).

We observed only minor differences between the most and least disturbed chamois, either because chamois respond similarly to human presence regardless of the encounter risk because hikers are present almost every day even if at different levels (especially during summer with the summer school break), or because they shift their activity in habitats further away from the main source of disturbance, i.e. the trails (Courbin et al., 2022). In our population, 85% of the individuals temporarily move away from trails every day when hikers are present (Courbin et al., 2022), demonstrating that even the less exposed chamois adjust their behaviour to human disturbance. This low tolerance affects the whole population and not just the most exposed individuals and might explain the weak difference observed between groups. Wolves also display high sensitivity to human disturbance and completely avoid the areas frequented by tourists, even if the level of attendance is as low as 40 visitors per week (Sytsma et al., 2022).

Mountain animals face both rising temperatures from ongoing climate warming, and modifications in their exposure to actual and perceived risks from the development of recreational activities and the return of predators in these landscapes. The interaction between those factors could eventually jeopardise their demography if particular attention is not paid to conserving habitats providing both refuge against summer heat and human disturbance (Chirichella et al., 2021; Frid & Dill, 2002). Moreover, both constraints can lead either to similar responses (e.g. rest in refuge areas), or to opposite reactions (e.g. reduce activity to avoid thermal stress, increase movement to reach thermal refuges or escape to limit predation risk), which complicates our understanding of their behavioural response. Here we highlight a strong effect of temperatures but low effects of hikers' disturbance on the activity pattern of northern female chamois. Identifying the effect of human disturbance on wildlife remains a difficult task, particularly at the population scale (Tablado & Jenni, 2017), and an integrated approach is needed to consider all forms of response, such as

variations in activity level and timing, behavioural budgets and spatial displacements.

Author Contributions

Lucie Thel: Conceptualization; Data curation; Formal analysis; Investigation; Methodology; Visualization; Writing—Original draft; Writing—Review & editing. **Mathieu Garel:** Conceptualization; Data curation; Formal analysis; Funding acquisition; Investigation; Methodology; Supervision; Validation; Visualization; Writing—Review & editing. **Pascal Marchand:** Conceptualization; Data curation; Methodology; Supervision; Validation; Writing—Review & editing. **Gilles Bourgoin:** Conceptualization; Methodology; Supervision; Validation; Writing—Review & editing. **Anne Loison:** Conceptualization; Funding acquisition; Methodology; Project administration; Resources; Supervision; Validation; Writing—Review & editing.

Data Availability

Data are available from the Zenodo Repository: <https://zenodo.org/record/8123239>.

Declaration of Interest

The authors declare they have no conflict of interest.

Acknowledgments

This study was funded by Agence Nationale de la Recherche (French National Research Agency, ANR) Grant Mov-It No. 16-CE02-0010 coordinated by Anne Loison, Centre National de la Recherche Scientifique (French National Centre for Scientific Research, CNRS). We thank all participants for helping with the capture and marking of animals, for the recovery of GPS collars, and for collecting GPS data on human activities: volunteers and professionals from the Office Français de la Biodiversité (formerly Office National de la Chasse et de la Faune Sauvage), the Office National des Forêts, the Groupement d'Intérêt Cynégétique des Bauges, the Parc Naturel Régional du massif des Bauges, the Observatoire Grande Faune et Habitats and the laboratory Environnements Dynamiques Territoires Montagnes (EDYTEM). This work was performed using the computing facilities of the IFB Cloud.

References

- Anderwald, P., Campell Andri, S., & Palme, R. (2021). Reflections of ecological differences? Stress responses of sympatric Alpine chamois and red deer to weather, forage quality, and human disturbance. *Ecology and Evolution*, 11(22), 15740–15753. <https://doi.org/10.1002/ece3.8235>
- Arllettaz, R., Pattthey, P., Baltic, M., Leu, T., Schaub, M., Palme, R., & Jenni-Eiermann, S. (2007). Spreading free-riding snow sports represent a novel serious threat for wildlife. *Proceedings of the Royal Society B: Biological Sciences*, 274(1614), 1219–1224.
- Ashby, K. (1972). Patterns of daily activity in mammals. *Mammal Review*, 1, 171–185.
- Beniston, M. (2003). Climatic change in mountain regions: A review of possible impacts. *Climatic Change*, 59(1–2), 5–31.
- Benoist, S., Garel, M., Cugnasse, J.-M., & Blanchard, P. (2013). Human disturbances, habitat characteristics and social environment generate sex-specific responses in vigilance of Mediterranean mouflon. *PLoS One*, 8(12), Article e82960.
- Bivand, R., & Lewin-Koh, N. (2022). *maptools: Tools for Handling Spatial Objects*. <https://cran.r-project.org/package=maptools>.
- Bonnot, N. C., Courriot, O., Berger, A., Cagnacci, F., Ciuti, S., De Groot, J. E., Gehr, B., Heinrich, M., Kjellander, P., Kröschel, M., Morellet, N., Sönnichsen, L., & Hewison, M. A. J. (2020). Fear of the dark? Contrasting impacts of humans versus lynx on diel activity of roe deer across Europe. *Journal of Animal Ecology*, 89(1), 132–145. <https://doi.org/10.1111/1365-2656.13161>
- Bonnot, N., Morellet, N., Verheyden, H., Cargnelutti, B., Lourtet, B., Klein, F., & Hewison, M. A. J. (2013). Habitat use under predation risk: hunting, roads and human dwellings influence the spatial behaviour of roe deer. *European Journal of Wildlife Research*, 59(2), 185–193.

- Bourgoin, G., Garel, M., Blanchard, P., Dubray, D., Maillard, D., & Gaillard, J.-M. (2011). Daily responses of mouflon (*Ovis gmelini musimon* x *Ovis* sp.) activity to summer climatic conditions. *Canadian Journal of Zoology*, 89(9), 765–773. <https://doi.org/10.1139/Z11-046>
- Bourgoin, G., Garel, M., Van Moorter, B., Dubray, D., Maillard, D., Marty, E., & Gaillard, J.-M. (2008). Determinants of seasonal variation in activity patterns of mouflon. *Canadian Journal of Zoology*, 86(12), 1410–1418.
- Brivio, F., Bertolucci, C., Tettamanti, F., Filli, F., Apollonio, M., & Grignolio, S. (2016). The weather dictates the rhythms: Alpine chamois activity is well adapted to ecological conditions. *Behavioral Ecology and Sociobiology*, 70(8), 1291–1304.
- Calenge, C. (2006). The package adehabitat for the R software: tool for the analysis of space and habitat use by animals. *Ecological Modelling*, 197, Article 1035.
- Carnevali, L., Lovari, S., Monaco, A., & Mori, E. (2016). Nocturnal activity of a diurnal species, the northern chamois, in a predator-free Alpine area. *Behavioural Processes*, 126, 101–107.
- Cederlund, G. (1989). Activity patterns in moose and roe deer in a north boreal forest. *Ecography*, 12, 39–45.
- Chirichella, R., Stephens, P. A., Mason, T. H. E., & Apollonio, M. (2021). Contrasting effects of climate change on Alpine chamois. *Journal of Wildlife Management*, 85(1), 109–120.
- Cloud Parc des Bauges. (2014). *Observatoire touristique du Parc Naturel Régional du Massif des Bauges—Présentation 25 Novembre 2014*. Retrieved from <https://cloud.parcdesbauges.com/index.php/login>. (Accessed 3 July 2023).
- Clutton-Brock, T., Albon, S., & Guinness, F. (1989). Fitness costs of gestation and lactation in wild mammals. *Nature*, 337, 260–262.
- Courbin, N., Garel, M., Marchand, P., Duparc, A., Debeffe, L., Börger, L., & Loison, A. (2022). Interacting lethal and nonlethal human activities shape complex risk tolerance behaviors in a mountain herbivore. *Ecological Applications*, Article e2640. <https://doi.org/10.1002/eap.2640>
- Darmon, G., Bourgoin, G., Marchand, P., Garel, M., Dubray, D., Jullien, J.-M., & Loison, A. (2014). Do ecologically close species shift their daily activities when in sympatry? A test on chamois in the presence of mouflon. *Biological Journal of the Linnean Society*, 111(3), 621–626. <https://doi.org/10.1111/bij.12228>
- Department of Parks and Wildlife. (2013). *Standard Operating Procedure, Humane killing of animals under field conditions in wildlife management*. <https://www.cdu.edu.au/files/2019-11/dpaw-sop15.1-humane-killing-of-animals.pdf>.
- Duparc, A., Redjadj, C., Viard-Crétat, F., Lavorel, S., Austrheim, G., & Loison, A. (2013). Co-variation between plant above-ground biomass and phenology in sub-alpine grasslands. *Applied Vegetation Science*, 16(2), 305–316.
- Fattorini, N., Brunetti, C., Baruzzi, C., Chiatante, G., Lovari, S., & Ferretti, F. (2019). Temporal variation in foraging activity and grouping patterns in a mountain-dwelling herbivore: Environmental and endogenous drivers. *Behavioural Processes*, 167, Article 103909.
- French, S. S., González-Suárez, M., Young, J. K., Durham, S., & Gerber, L. R. (2011). Human disturbance influences reproductive success and growth rate in California sea lions (*Zalophus californianus*). *PLoS One*, 6(3), Article e17686. <https://doi.org/10.1371/journal.pone.0017686>
- Frid, A., & Dill, L. (2002). Human-caused disturbance stimuli as a form of predation risk. *Conservation Ecology*, 6(1). <https://doi.org/10.5751/es-00404-060111>
- Gaillard, J.-M., Festa-Bianchet, M., Yoccoz, N. G., Loison, A., & Toigo, C. (2000). Temporal variation in fitness components and population dynamics of large herbivores. *Annual Review of Ecology and Systematics*, 31(1), 367–393. <https://doi.org/10.1146/annurev.ecolsys.31.1.367>
- Garel, M., Loison, A., Gaillard, J.-M., Cugnasse, J.-M., & Maillard, D. (2004). The effect of a severe drought on mouflon lamb survival. *Proceedings of the Royal Society B: Biological Sciences*, 271(suppl_6), S471–S473.
- Gaynor, K. M., Hoinowski, C. E., Carter, N. H., & Brashares, J. S. (2018). The influence of human disturbance on wildlife nocturnality. *Science*, 360(6394), 1232–1235. <https://doi.org/10.1126/science.aar7121>
- Gehr, B., Hofer, E., Pewsner, M., Ryser, A., Vimercati, E., Vogt, K., & Keller, L. F. (2018). Hunting-mediated predator facilitation and superadditive mortality in a European ungulate. *Ecology and Evolution*, 8, 109–119.
- Gobiet, A., Kotlarski, S., Beniston, M., Heinrich, G., Rajczak, J., & Stoffel, M. (2014). 21st century climate change in the European Alps—A review. *Science of the Total Environment*, 493, 1138–1151.
- Greives, T. J., Kingma, S. A., Kranstauber, B., Mortega, K., Wikelski, M., van Oers, K., Mateman, A. C., Ferguson, G. A., Beltrami, G., & Hau, M. (2015). Costs of sleeping in: circadian rhythms influence cuckoldry risk in a songbird. *Functional Ecology*, 29(10), 1300–1307.
- Grignolio, S., Brivio, F., Apollonio, M., Frigato, E., Tettamanti, F., Filli, F., & Bertolucci, C. (2018). Is nocturnal activity compensatory in chamois? A study of activity in a cathemeral ungulate. *Mammalian Biology*, 93, 173–181.
- Hamel, S., & Côté, S. D. (2008). Trade-offs in activity budget in an alpine ungulate: contrasting lactating and nonlactating females. *Animal Behaviour*, 75(1), 217–227.
- Kearney, M. R., Gillingham, P. K., Bramer, I., Duffy, J. P., & Maclean, I. M. D. (2020). A method for computing hourly, historical, terrain-corrected microclimate anywhere on Earth. *Methods in Ecology and Evolution*, 11(1), 38–43.
- Kearney, M. R., & Porter, W. P. (2017). NicheMapR—an R package for biophysical modelling: the microclimate model. *Ecography*, 40(5), 664–674.
- Kerouanton, C. (2020). *Analyse spatio-temporelle des mobilités de randonneurs dans le PNR du Massif des Bauges*. Chambéry, France: Université de Savoie.
- Larson, C. L., Reed, S. E., Merenlender, A. M., & Crooks, K. R. (2016). Effects of recreation on animals revealed as widespread through a global systematic review. *PLoS One*, 11(12), Article e0167259.
- Legifrance. (2023). *Arrêté du 1er février 2013 fixant les conditions d'agrément, d'aménagement et de fonctionnement des établissements utilisateurs, éleveurs ou fournisseurs d'animaux utilisés à des fins scientifiques et leurs contrôleurs*. Retrieved from https://www.legifrance.gouv.fr/loda/article_lc/LEGIARTI000027038776. (Accessed 6 January 2024).
- Lesmerises, F., Déry, F., Johnson, C. J., & St-Laurent, M.-H. (2018). Spatiotemporal response of mountain caribou to the intensity of backcountry skiing. *Biological Conservation*, 217, 149–156.
- Lesmerises, F., Johnson, C. J., & St-Laurent, M.-H. (2017). Refuge or predation risk? Alternate ways to perceive hiker disturbance based on maternal state of female caribou. *Ecology and Evolution*, 7(3), 845–854. <https://doi.org/10.1002/ece3.2672>
- Lima, S. L., & Bednekoff, P. A. (1999). Temporal variation in danger drives anti-predator behavior: the predation risk allocation hypothesis. *American Naturalist*, 153(6), 649–659.
- Lindstedt, S. L., & Boyce, M. S. (1985). Seasonality, fasting endurance, and body size in mammals. *American Naturalist*, 125(6), 873–878. <https://doi.org/10.1086/284385>
- Loison, A., Jullien, J.-M., & Menaut, P. (1999). Subpopulation structure and dispersal in two populations of chamois. *Journal of Mammalogy*, 80(2), 620–632.
- Long, R. A., Martin, T. J., & Barnes, B. M. (2005). Body temperature and activity patterns in free-living arctic ground squirrels. *Journal of Mammalogy*, 86(2), 314–322.
- Lopez, J. F. (2001). *Inventaire systématique de la flore et de la végétation du Massif des Bauges*. Le Châtelard, France: Technical Report, Parc Naturel Régional du Massif des Bauges.
- Louprance. (2021). *Situation du loup en France*. Retrieved from <https://www.louprance.fr/suivi-du-loup/situation-du-loup-en-france/>. (Accessed 3 July 2023).
- Maclean, I. M. D., Mosedale, J. R., & Bennie, J. J. (2019). Microclima: An R package for modelling meso- and microclimate. *Methods in Ecology and Evolution*, 10(2), 280–290.
- Malagnino, A. (2022). *Déterminants environnementaux et individuels des mouvements et de l'utilisation de l'espace chez trois espèces d'ongulés sauvages* (Doctoral dissertation). Chambéry, France: Université Grenoble Alpes.
- Marchand, P., Garel, M., Bourgoin, G., Dubray, D., Maillard, D., & Loison, A. (2014). Impacts of tourism and hunting on a large herbivores spatio-temporal behavior in and around a French protected area. *Biological Conservation*, 177, 1–11.
- Marchand, P., Garel, M., Bourgoin, G., Dubray, D., Maillard, D., & Loison, A. (2015). Sex-specific adjustments in habitat selection contribute to buffer mouflon against summer conditions. *Behavioral Ecology*, 26(2), 472–482.
- Milling, C. R., Rachlow, J. L., Johnson, T. R., Forbey, J. S., & Shipley, L. A. (2017). Seasonal variation in behavioral thermoregulation and predator avoidance in a small mammal. *Behavioral Ecology*, 28, 1236–1247.
- Pepin, N., Bradley, R. S., Diaz, H. F., Baraër, M., Caceres, E. B., Forsythe, N., Fowler, H., Greenwood, G., Hashmi, M. Z., Liu, X. D., Miller, J. R., Ning, L., Ohmura, A., Palazzi, E., Rangwala, I., Schöner, W., Severskiy, I., Shahgedanova, M., Wang, M. B., Williamson, S. N., & Yang, D. Q. (2015). Elevation-dependent warming in mountain regions of the world. *Nature Climate Change*, 5(5), 424–430.
- Phillips, G. E., & Allredge, A. W. (2000). Reproductive success of elk following disturbance by humans during calving season. *Journal of Wildlife Management*, 521–530.
- R Core Development Team. (2022). *R: A language and environment for statistical computing*. R Foundation for Statistical Computing.
- Richard, Q., Toigo, C., Appolinaire, J., Loison, A., & Garel, M. (2017). From gestation to weaning: Combining robust design and multi-event models unveils cost of lactation in a large herbivore. *Journal of Animal Ecology*, 86, 1497–1509.
- Rogala, J. K., Hebblewhite, M., Whittington, J., White, C. A., Coleshill, J., & Musiani, M. (2011). Human activity differentially redistributes large mammals in the Canadian Rockies National Parks. *Ecology and Society*, 16(3).
- Ruckstuhl, K., & Ingold, P. (1998). Baby-sitting in chamois: a form of cooperation in females? *Mammalia*, 62, 125–128.
- Schmeller, D. S., Urbach, D., Bates, K., Catalan, J., Cogălniceanu, D., Fisher, M. C., Friesen, J., Füreder, L., Gaube, V., Haver, M., Jacobsen, D., Le Roux, G., Lin, Y.-P., Loyau, A., Machate, O., Mayer, A., Palomo, I., Plutzer, C., Sentenac, H., Sommaruga, R., Tiberti, R., & Ripplé, W. J. (2022). Scientists' warning of threats to mountains. *Science of the Total Environment*, 853, Article 158611.
- Selman, W., Qualls, C., & Owen, J. C. (2013). Effects of human disturbance on the behavior and physiology of an imperiled freshwater turtle. *Journal of Wildlife Management*, 77(5), 877–885.
- Semenzato, P., Cagnacci, F., Ossi, F., Eccel, E., Morellet, N., Hewison, A. J. M., Sturaro, E., & Ramanzin, M. (2021). Behavioural heat-stress compensation in a cold-adapted ungulate: Forage-mediated responses to warming Alpine summers. *Ecology Letters*, 24(8), 1556–1568.
- Signorell, A. (2023). *DescTools: Tools for Descriptive Statistics*. <https://CRAN.R-project.org/package=DescTools>.
- Strava. (2022). *Strava Global Heatmap*. Retrieved from <https://www.strava.com/heatmap>. (Accessed 9 March 2022).
- Sytsma, M. L., Lewis, T., Gardner, B., & Prugh, L. R. (2022). Low levels of outdoor recreation alter wildlife behaviour. *People and Nature*, 4(6), 1547–1559.
- Tablado, Z., & Jenni, L. (2017). Determinants of uncertainty in wildlife responses to human disturbance. *Biological Reviews*, 92(1), 216–233.
- Thorsen, N. H., Bischof, R., Mattisson, J., Hofmeester, T. R., Linnell, J. D. C., & Odden, J. (2022). Smartphone app reveals that lynx avoid human recreationists on local scale, but not home range scale. *Scientific Reports*, 12(1), 1–13.

- van Beest, F. M., & Milner, J. M. (2013). Behavioural responses to thermal conditions affect seasonal mass change in a heat-sensitive northern ungulate. *PLoS One*, 8(6), Article e65972.
- Venter, Z., Gundersen, V., Scott, S. L., & Barton, D. N. (2023). Bias and precision of crowdsourced recreational activity data from Strava. *Landscape and Urban Planning*, 232, Article 104686.
- Watanuki, Y., & Nakayama, Y. (1993). Age difference in activity pattern of Japanese monkeys: effects of temperature, snow, and diet. *Primates*, 34(4), 419–430.
- Wheaton, B. (2010). Introducing the consumption and representation of lifestyle sports. *Sport in Society*, 13(7–8), 1057–1081.
- Wood, S. N. (2011). Fast stable restricted maximum likelihood and marginal likelihood estimation of semiparametric generalized linear models. *Journal of the Royal Statistical Society*, 73(1), 3–36.
- Wood, S. N. (2017). *Generalized Additive Models: An Introduction with R* (2nd ed.). Chapman and Hall/CRC.
- Wood, S. N., Goude, Y., & Shaw, S. (2015). Generalized additive models for large data sets. *Journal of the Royal Statistical Society: Series C (Applied Statistics)*, 64(1), 139–155.
- Worton, B. J. (1989). Kernel methods for estimating the utilization distribution in home-range studies. *Ecology*, 70(1), 164–168.
- Xu, W., Gong, Y., & Wang, H. (2021). Alert time reflects the negative impacts of human disturbance on an endangered bird species in Changbai Mountain, China. *Global Ecology and Conservation*, 28, Article e01709.

Appendix

Analyses Using Three Levels of Temporal Disturbance

We ran supplementary analyses considering three contrasting temporal disturbance categories, namely (1) weekdays during the school period, (2) weekdays during the summer break and (3) weekends and public holidays. These supplementary analyses provided very similar results to the original analysis contrasting two levels of disturbance (i.e. weekdays versus weekends/public holidays, see main text). Compare Fig. 1 and Fig. A6, Fig. 2 and Fig. A7, Fig. 3 and Fig. A8, Fig. 4 and Fig. A9 and Fig. 5 and Fig. A10.

Comparison Between Strava Map and GPS Data

GPS trackers were distributed to hikers' groups during summer 2014 and 2015 in two sites of the National Game and Hunting Reserve of Les Bauges massif (NGHRB; Armenaz trail: $N = 73$ groups; Dent des Portes trail: $N = 114$ groups) to study space use by hikers (Kerouanton, 2020). Trails were segmented according to the number of people using them ($N = 62$ segments) and we evaluated the proportion of use for each trail section, relative to each study site. This protocol allowed us to precisely monitor hikers' spatial and temporal behaviour in our study site, but (1) only a very small area of the study site was covered, (2) during a short period of time which solely encompassed a small part of our study period (2004–2020), and (3) illustrated the spatial behaviour of a small number of hikers only.

Strava (www.strava.com) is a training app to which trail runners and hikers can voluntarily upload their GPS tracks. Strava Global Heatmap is a downloadable heatmap which illustrates the attendance rates of the trails via values ranging from 0 for no attendance to 255 for the highest attendance for each pixel of the map (Strava, 2022). In the NGHRB, the lowest value recorded for a trail pixel was 51 and the highest was 255. The main advantage of Strava Global Heatmap consists in its high precision and large coverage to capture spatial variation in recreational activities, although Strava users only represent a low proportion and a nonrandom sample of the recreational population (Venter et al., 2023).

Methods

First, we compared track overlap by visual inspection between Strava and GPS data sets in the NGHRB. Second, we compared the

relative attendance by trail runners and hikers assessed from Strava and GPS data sets, respectively. We extracted the mean value of all the pixels of the Strava map located on a given trail segment of the GPS map. We tested for association between this mean value and the relative proportion of use of the corresponding segment with the Pearson correlation test.

Results and Discussion

Strava and GPS trails (where available) overlapped very well (Fig. A11). Some trails used by the hikers equipped with GPS trackers in Armenaz sector seemed to be only rarely used by Strava's users according to the Strava map. Nevertheless, both attendance measures were highly correlated (Pearson correlation: $\rho = 0.55$, $r = 3.5$, $N = 61$, $P = 0.002$; Fig. A12). We concluded that Strava is a good proxy of relative human attendance, in particular hikers' attendance, in our study site, and can be used to predict hikers' attendance at a large spatial scale even in the absence of GPS tracking of hikers (see also Courbin et al., 2022).

Interindividual Variability in the Circadian Activity Pattern in Chamois

All the chamois in the study displayed the characteristic bimodal activity pattern (i.e. one activity peak in the early morning and one in the evening), with a smaller peak during the night, as illustrated by the mean activity pattern calculated from all chamois and all days available (raw data, Fig. A14). However, the circadian activity patterns of the chamois were also characterized by a high interindividual variability. The amplitude (compare Fig. A15a and b) and the spread (compare Fig. A15a and c) of the activity peaks varied widely among individuals. Several chamois displayed a small peak during the day (e.g. Fig. A15d). These variations could be due to individual personality, age (Watanuki & Nakayama, 1993), different life histories such as the presence or absence of a kid (Lesmerises et al., 2017; but most adult females give birth in the site) or external conditions experienced by the individual in its home range (Bourgoin et al., 2011). It could also be due to data collection. Each chamois was equipped with a GPS collar and an activity sensor, whose sensitivity to movement can vary intrinsically and according to weather conditions experienced by the chamois, among other factors. Moreover, collars were put on and removed between June and September, which is also the period of interest in our study. Thus, the number of monitored days was highly variable among chamois (Fig. A3).

Fitting a Generalized Additive Mixed Model to Describe Activity Patterns

We adjusted a generalized additive mixed model with a binomial distribution of errors to our activity data (northern chamois in the National Game and Hunting Reserve of Les Bauges massif, 2004–2020) with the maximum number of knots $k = 24$ to predict the activity pattern for each of the eight levels of the temperatures-disturbance categorical variable for a theoretical chamois (i.e. random effect set to null). The procedure is described in the Methods and the relevant outputs of the model are presented in the Results. Tables A1–A5 present the raw outputs from the 'summary' function (model outputs, approximate significance of smooth terms) and the 'gam.check' function (basis dimension checking; 'mgcv' package, Wood, 2011, 2017, Wood et al., 2015) calculated with R software (R Core Development Team, 2022, version R 4.3.0).

Table A1

Median of the total number of hikers per day on the Armenaz trail in the National Game and Hunting Reserve of Les Bauges massif (part of summer 2016 and summer 2017)

Day	Median of the total number of hikers on the trail	Relative difference (%) as compared to the least disturbed day (i.e. Tuesday)
Monday	44	+42
Tuesday	31	0
Wednesday	39	+26
Thursday	53	+71
Friday	39	+26
Saturday	70	+126
Sunday	83	+168
Public holiday	114	+268

*Days in bold type correspond to weekends and public holidays (e.g. National day).

Table A2

Sample size for each level of the synthesis eight-level categorical variable representing all possible combinations between temperatures classes, levels of temporal disturbance and of spatial disturbance

Temperatures - disturbance variable levels			Sample size (total no. of activity data)	No. of chamois-days
Spatial disturbance	Temporal disturbance	Temperatures		
Low	Weekdays	Low	244 224	848
Low	Weekends & public holidays	Low	120 096	417
Low	Weekdays	High	241 632	839
Low	Weekends & public holidays	High	87 264	303
High	Weekdays	Low	213 984	743
High	Weekends & public holidays	Low	104 832	364
High	Weekdays	High	202 752	704
High	Weekends & public holidays	High	70 848	246

Table A3

Model outputs as presented by the summary function of R software (R Core Development Team, 2022, version R 4.3.0)

	Estimate	SE	Z	Pr (> z)
(Intercept)	-0.077445	0.028887	-2.681	0.007**
Three.L	0.167552	0.036227	4.625	3.74e-06***
Three.Q	0.003719	0.006633	0.561	0.575
Three.C	-0.033791	0.043036	-0.785	0.432
Three^4	-0.010713	0.005927	-1.808	0.071
Three^5	0.031552	0.059470	0.531	0.596
Three^6	0.019075	0.006381	2.989	0.003**
Three^7	-0.029235	0.010000	-2.923	0.003**

Family: binomial; link function: logit; formula: actcod~three+s(heure_num2, bs='cc', k=24)+s(heure_num2, bs='cc', k=24, by=three, m=1)+s(length_day_min, k=24)+ti(heure_num2, length_day_min, bs='cc', k=24)+s(id_year, bs='re'); signif. R^2 adj = 0.149; deviance explained = 11.4%; fREML = 1.8258e+06; scale estimate = 1; N = 1 285 632. 'actcod' corresponds to the activity of chamois (0: inactive; 1: active), 'three' corresponds to the temperatures - disturbance variable, 'heure_num2' corresponds to the time of day variable, 'length_day_min' corresponds to the daylength variable and 'id_year' corresponds to the year.

*** $P < 0.001$; ** $P < 0.01$.**Table A4**

Checking of approximate significance of smooth terms (extract from the outputs of the summary function)

	edf	Ref.df	χ^2	P
s(heure_num2)	21.805	22	29595.41	<2e-16***
s(heure_num2):threecold-high_dist_t-low_dist_s	9.794	22	78.74	<2e-16***
s(heure_num2):threecold-low_dist_t-high_dist_s	12.729	22	49.77	2.67e-06***
s(heure_num2):threecold-high_dist_t-high_dist_s	15.218	22	94.00	<2e-16***
s(heure_num2):threehot-low_dist_t-low_dist_s	20.328	22	4475.50	<2e-16***
s(heure_num2):threehot-high_dist_t-low_dist_s	18.117	22	2256.01	<2e-16***
s(heure_num2):threehot-low_dist_t-high_dist_s	19.385	22	4928.33	<2e-16***
s(heure_num2):threehot-high_dist_t-high_dist_s	17.635	22	2633.00	<2e-16***
s(length_day_min)	20.154	23	6395.75	<2e-16***
ti(heure_num2, length_day_min)	437.724	484	23542.63	<2e-16***
s(id_year)	128.343	129	27969.67	<2e-16***

'heure_num2' corresponds to the time of day variable, 'length_day_min' corresponds to the daylength variable, 'id_year' corresponds to the year. 'cold' and 'hot' correspond to the two levels of the temperature variable. 'dist_t' and 'dist_s' correspond to the temporal and spatial disturbance variables, respectively. These variables can be either 'low' or 'high'. For instance, threecold-high_dist_t-low_dist_s corresponds to the level of the temperatures - disturbance variable of a cold day, which is also a weekend or public holiday, for a chamois living in the least exposed areas.

*** $P < 0.001$.

Table A5
Checking of the basis dimension (knots) using the 'gam.check' function

	k'	edf	k	P
s(heure_num2)	22.00	21.80	0.98	0.205
s(heure_num2):threecold-high_dist_t-low_dist_s	22.00	9.79	0.98	0.219
s(heure_num2):threecold-low_dist_t-high_dist_s	22.00	12.73	0.98	0.204
s(heure_num2):threecold-high_dist_t-high_dist_s	22.00	15.22	0.98	0.219
s(heure_num2):threehot-low_dist_t-low_dist_s	22.00	20.33	0.98	0.195
s(heure_num2):threehot-high_dist_t-low_dist_s	22.00	18.12	0.98	0.188
s(heure_num2):threehot-low_dist_t-high_dist_s	22.00	19.39	0.98	0.193
s(heure_num2):threehot-high_dist_t-high_dist_s	22.00	17.64	0.98	0.227
s(length_day_min)	23.00	20.15	1.04	0.905
ti(heure_num2, length_day_min)	484.00	437.72	0.96	0.082

Method: fREML; optimizer: perf newton; full convergence after eight iterations; gradient range [-0.0019499369,0.01024975] (score 1825808 & scale 1); Hessian positive definite, eigenvalue range [0.34543,93.24873]; model rank = 822/822, basis dimension (k) checking results. Low P value ($k < 1$) may indicate that k is too low, especially if edf is close to k . 'heure_num2' corresponds to the time of day variable, 'length_day_min' corresponds to the daylength variable, 'id_year' corresponds to the year. 'cold' and 'hot' correspond to the two levels of the temperature variable. 'dist_t' and 'dist_s' correspond to the temporal and spatial disturbance variables, respectively. These variables can be either 'low' or 'high'. For instance, threecold-high_dist_t-low_dist_s corresponds to the level of the temperatures - disturbance variable of a cold day, which is also a weekend or public holiday, for a chamois living in the least exposed areas.

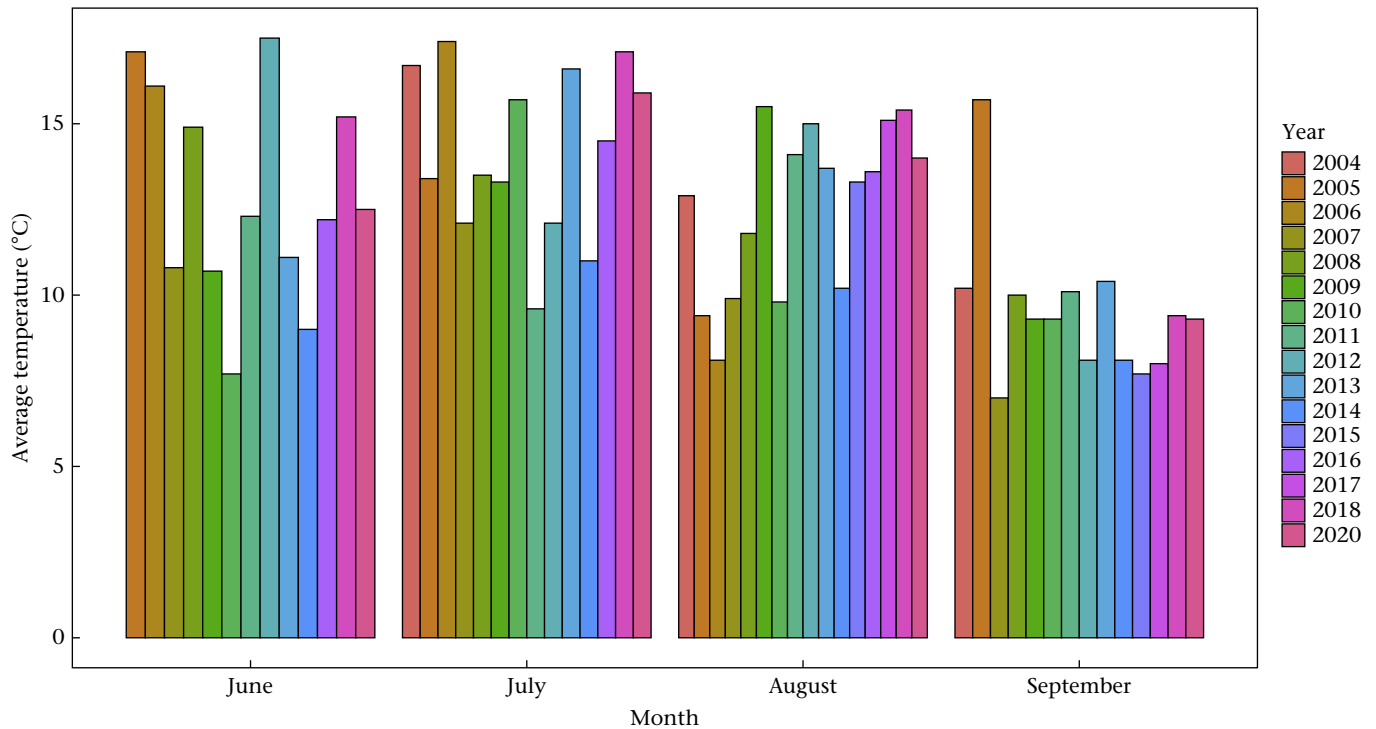


Figure A1. Monthly mean of daily temperatures (°C) in summer over the study period (between 2004 and 2020).

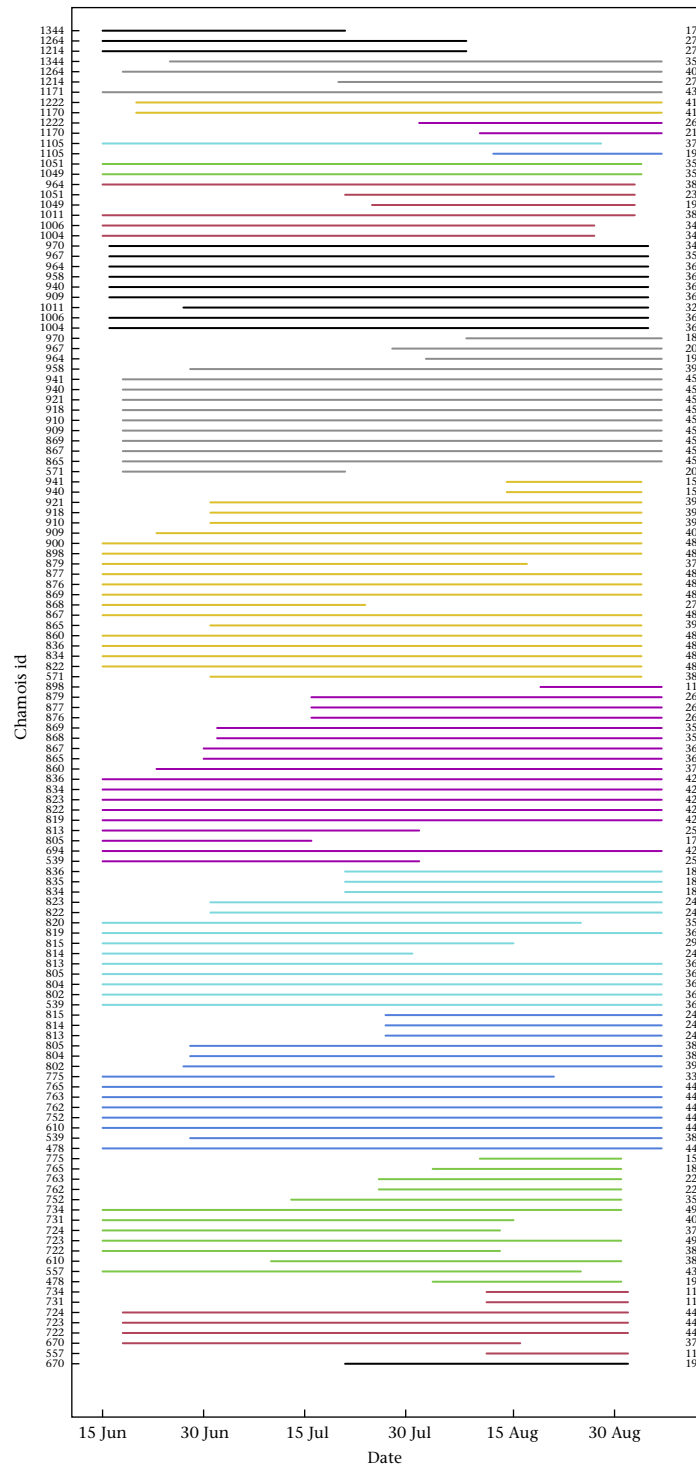


Figure A2. Sampling period for each collared female northern chamois ($N = 62$) every year (represented by the different colours, from bottom, i.e. 2004 to top, i.e. 2020) in the National Game and Hunting Reserve of Les Bauges massif, in summer (15 June to 7 September). The numbers on the left of each sampling period correspond to the chamois identity and can be repeated more than once as some chamois were collared during several years. The numbers on the right of each sampling period correspond to the number of days included in the analyses, i.e. when the activity monitoring was complete over the 1440 min period (i.e. 24 h; 288 records, i.e. one record for every 5 min bout).

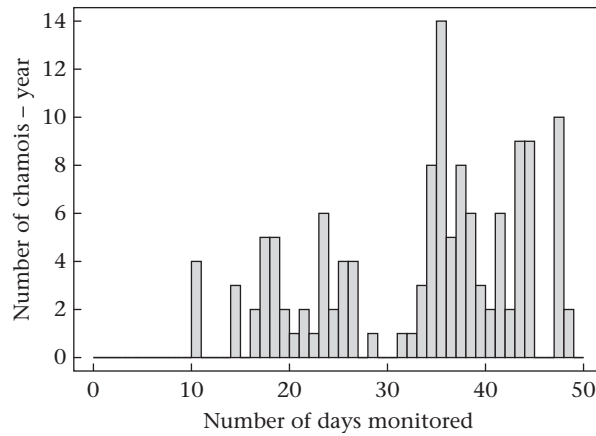


Figure A3. Distribution of chamois according to the number of days they were monitored during one summer ($N = 131$ chamois-years, chamois could be monitored during several consecutive summers) in the National Game and Hunting Reserve of Les Bauges massif between 2004 and 2020 (15 June to 7 September).

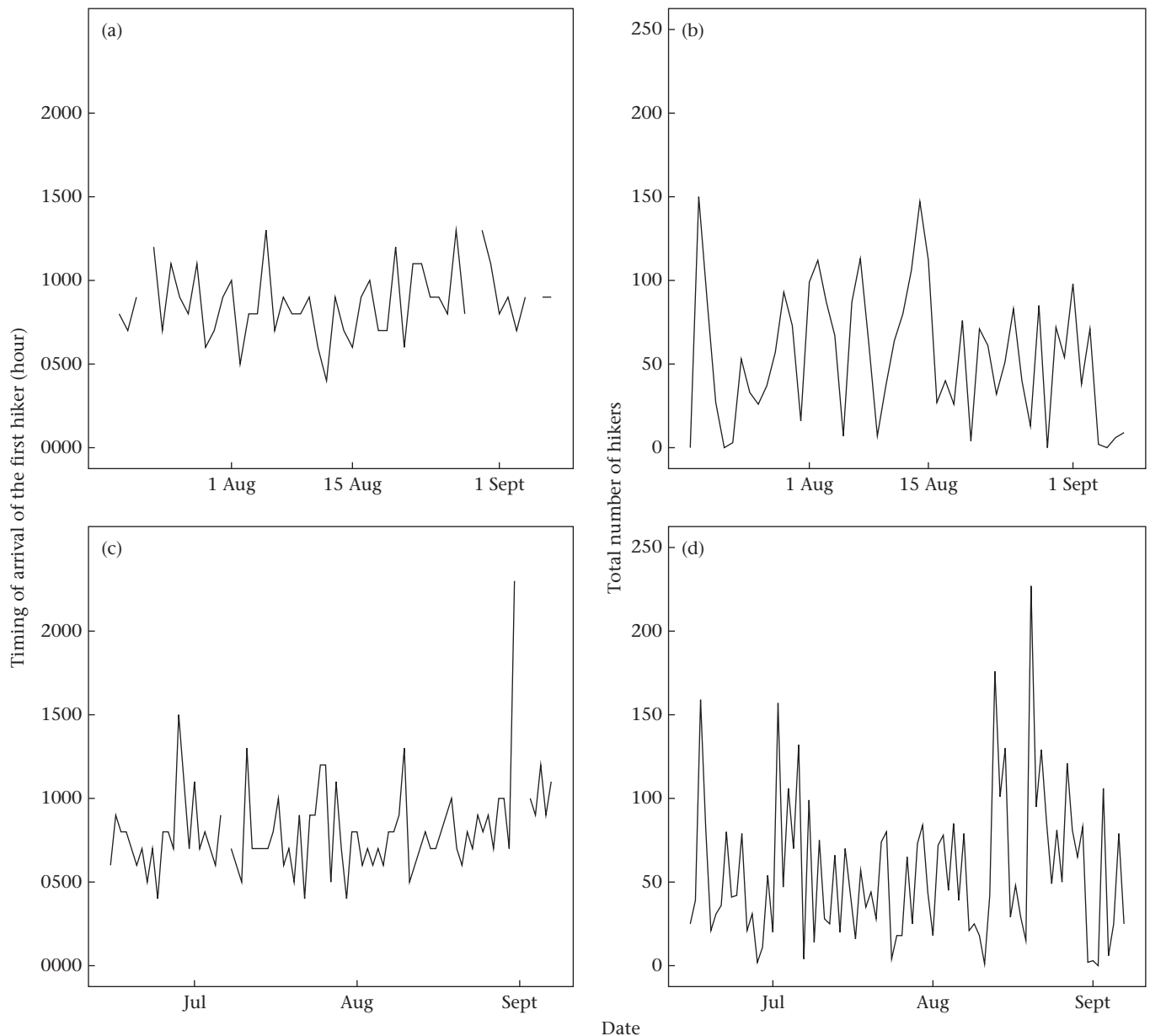


Figure A4. (a, c) Daily hikers' attendance as the time of arrival of the first hiker going up the mountain and (b, d) the total number of hikers during the day (between 0000 hours UTC and 2359 hours UTC) during (a, b) 2016 (1 August – 1 September) and (c, d) 2017 (July – September).

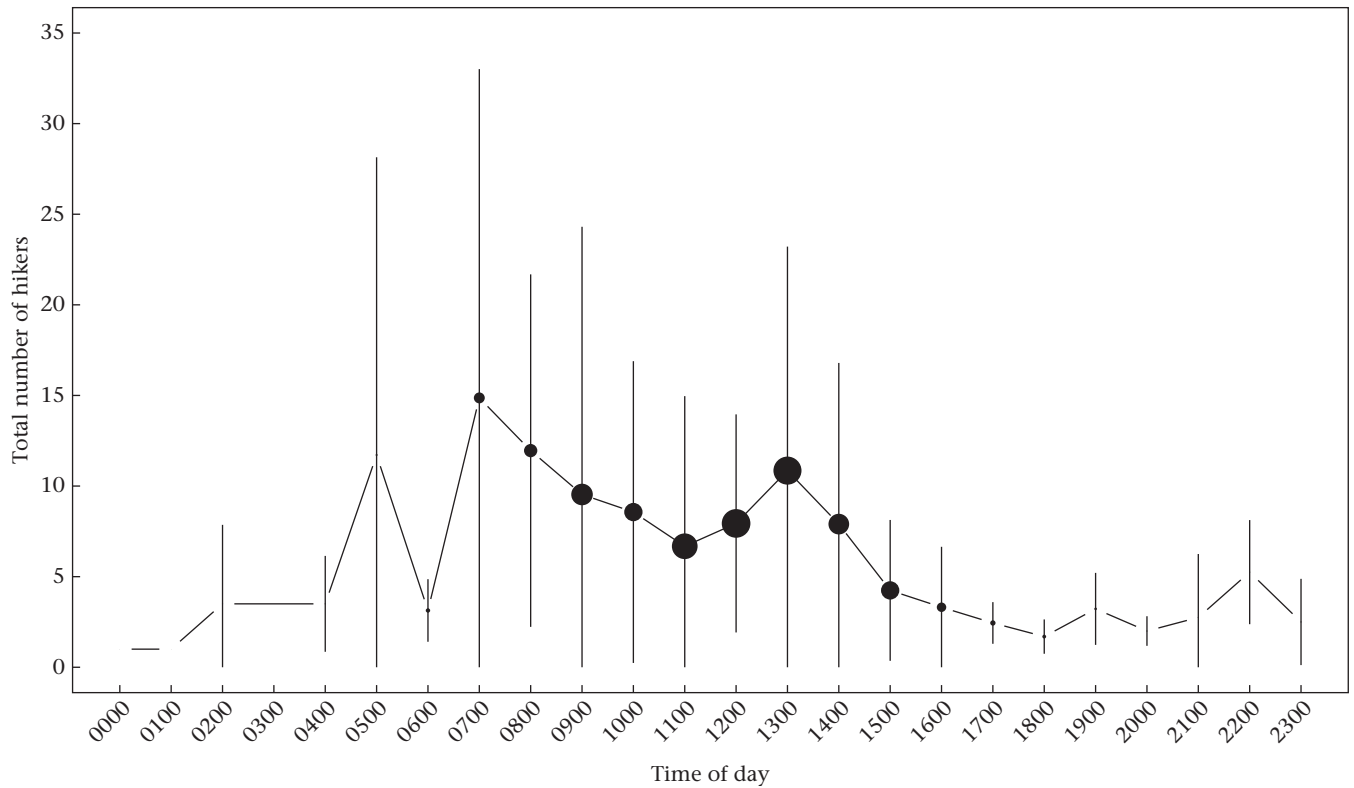


Figure A5. Mean total number of hikers present on the trails (part of summer 2016 and summer 2017) in the study site (National Game and Hunting Reserve of Les Bauges massif) according to the hour of the day (Coordinated Universal Time UTC). The size of each point is proportional to the number of days when at least one hiker was seen for this hour. The vertical bars correspond to the standard deviation. As the counter is located at the beginning of the trail, hikers are expected to reach the chamois area approximately 1 h after their presence has been detected.

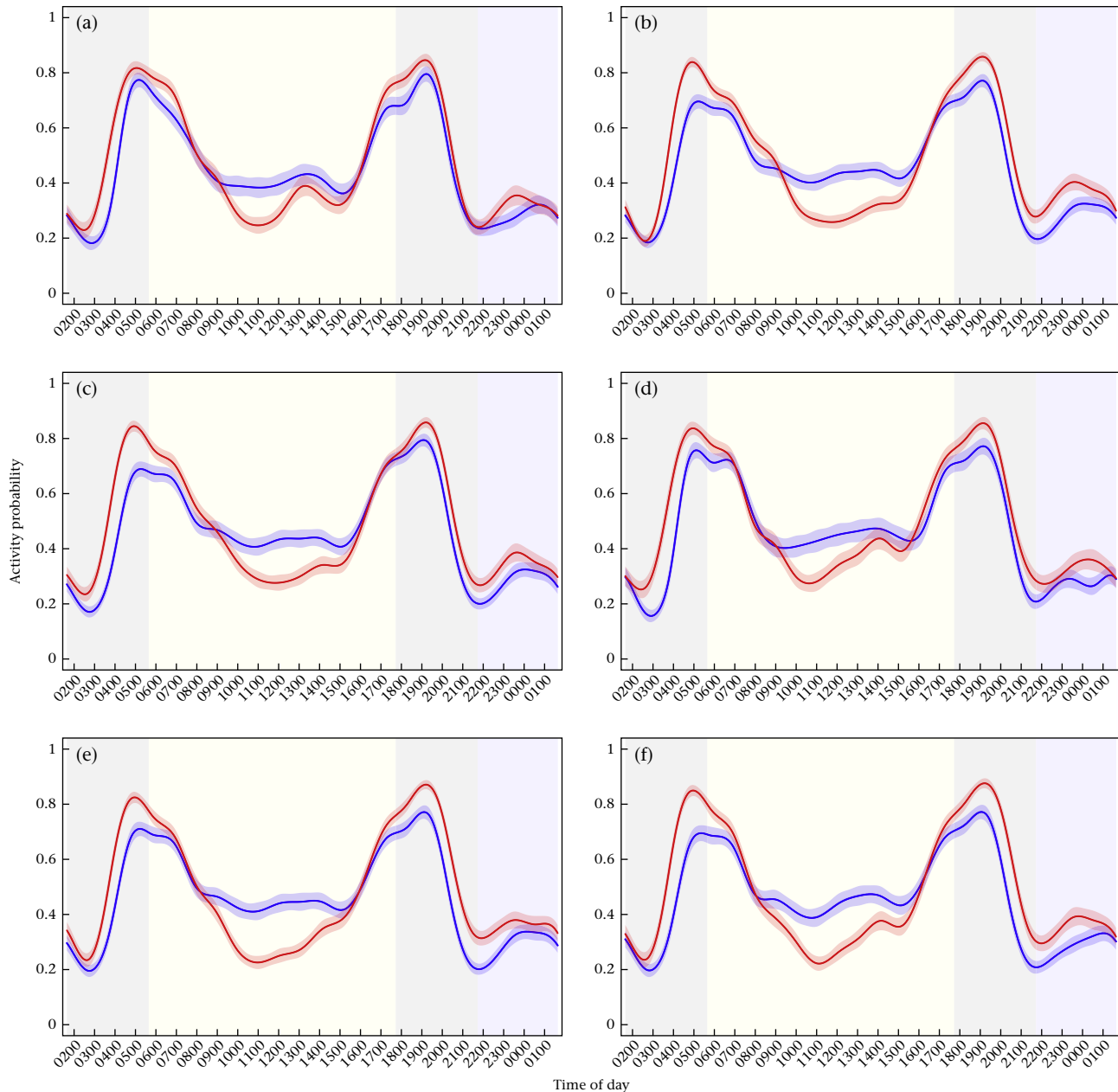


Figure A6. Predicted circadian activity patterns (activity ranges between 0 for inactivity and 1 for full-time activity) of 62 female northern chamois in the National Game and Hunting Reserve of Les Bauges massif, in summer (15 June to 7 September 2004–2020), according to temperatures (blue: cold days; red: hot days) and human disturbance: (a) chamois living in the least exposed areas during weekdays of the school period; (b) chamois living in the least exposed areas during weekdays of the summer break; (c) chamois living in the least exposed areas during weekends and public holidays; (d) chamois living in the most exposed areas during weekdays of the school period; (e) chamois living in the most exposed areas during weekdays of the summer break; (f) chamois living in the most exposed areas during weekends and public holidays. Solid lines represent predicted values from the model and shaded areas around the curves represent 95% confidence intervals. Background shades represent the periods used to calculate the area under the activity curve for morning and evening crepuscules (grey) and daytime (yellow). Time of day represents hours in Coordinated Universal Time (UTC).

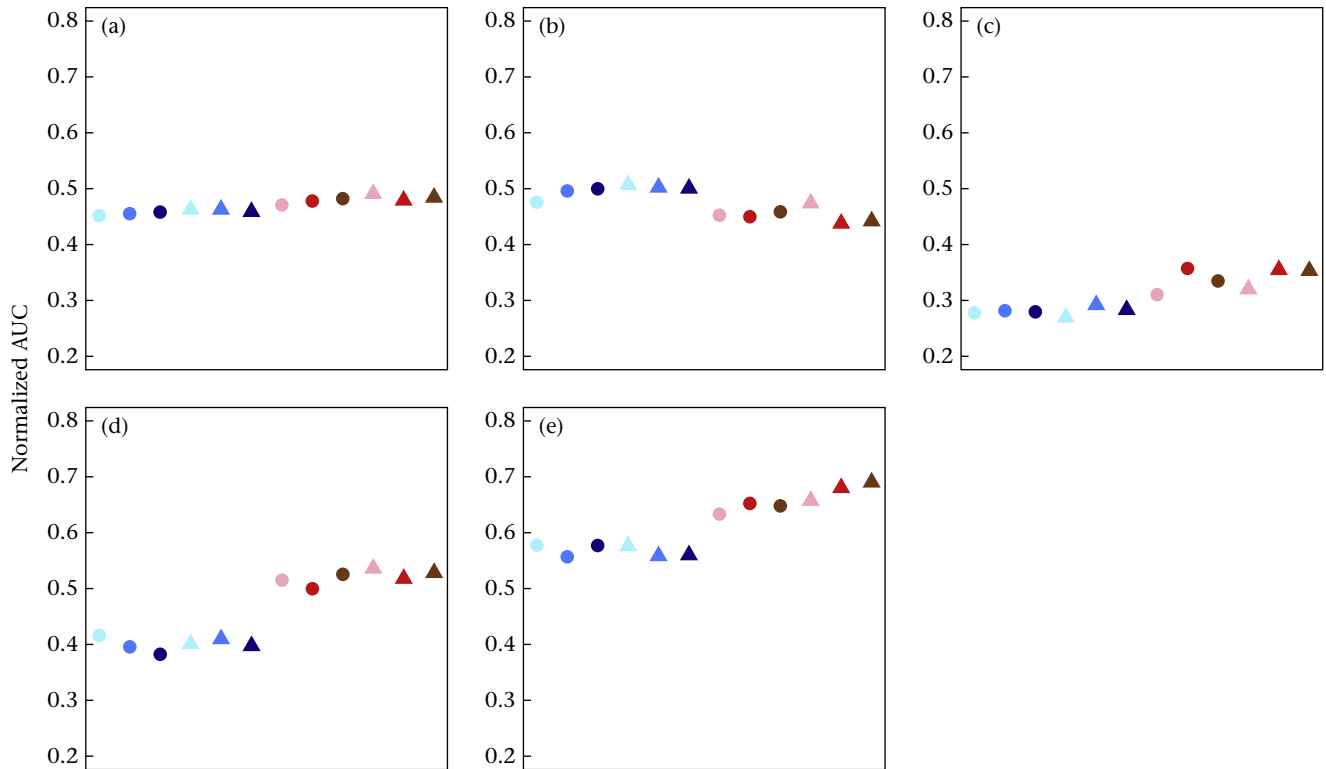


Figure A7. Area under curve (AUC, unitless) normalized by the duration of each period for each situation of interest, namely a combination of different levels of temperatures (blue: cold days; red: hot days), spatial disturbance (dot: low exposure; triangle: high exposure) and temporal disturbance (light colour: weekdays during school period; medium colour: weekdays during summer break; dark colour: weekends and public holidays): (a) total (1440 min), (b) diurnal (724.8 min), (c) nocturnal (235.2 min), (d) morning crepuscular (240 min) and (e) evening crepuscular (240 min) activity. AUC are calculated from predicted circadian activity patterns of northern chamois in the National Game and Hunting Reserve of Les Bauges massif, in summer (15 June to 7 September 2004–2020). We defined 'diurnal' as the period elapsed between 120 min after dawn and 120 min before dusk, 'nocturnal' as the period elapsed between 120 min after dusk and 120 min before dawn and 'crepuscule' as the remaining periods in the morning and in the evening (see text for details).

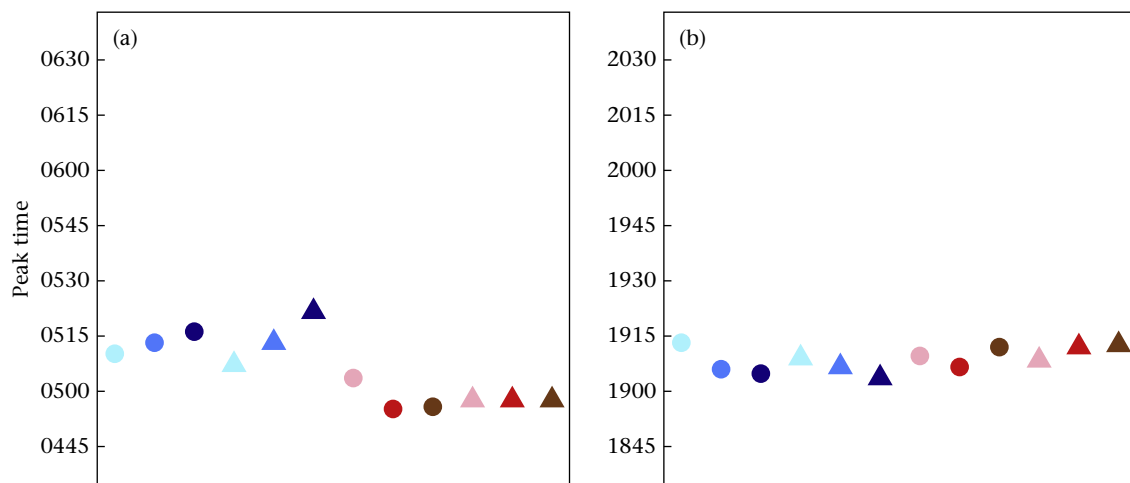


Figure A8. Timing of the activity peak (TAP, time of day when the activity peaks happen, i.e. the time when the highest probability of activity occurs) for each situation of interest, namely a combination of different levels of temperatures (blue: cold days; red: hot days), spatial disturbance (dot: low exposure; triangle: high exposure) and temporal disturbance (light colour: weekdays during school period; medium colour: weekdays during summer break; dark colour: weekends and public holidays): (a) morning peak and (b) evening peak. TAP are calculated from predicted circadian activity patterns of northern chamois in the National Game and Hunting Reserve of Les Bauges massif, in summer (15 June to 7 September 2004–2020). Note the change of interval on the y axis between (a) and (b), although the scale stays the same.

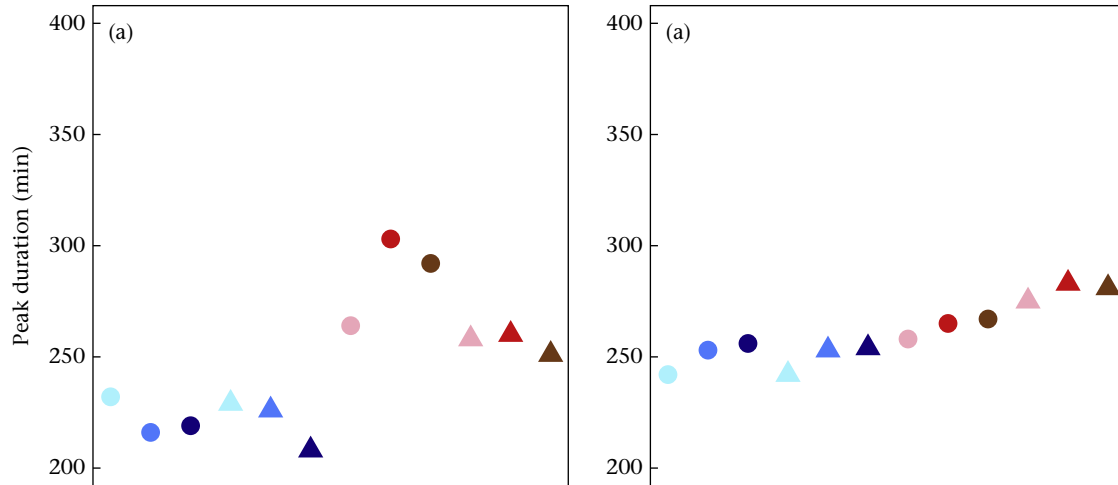


Figure A9. Peak duration (PD, min) for each situation of interest, namely a combination of different levels of temperatures (blue: cold days; red: hot days), spatial disturbance (dot: low exposure; triangle: high exposure) and temporal disturbance (light colour: weekdays during school period; medium colour: weekdays during summer break; dark colour: weekends and public holidays):(a) morning and (b) evening peak. PD are calculated from predicted circadian activity patterns of northern chamois in the National Game and Hunting Reserve of Les Bauges massif, in summer (15 June to 7 September 2004–2020).

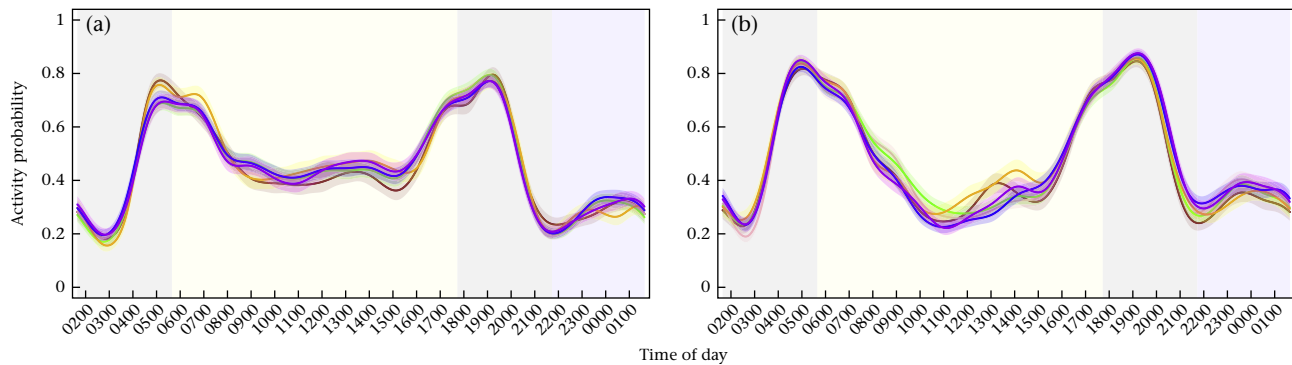


Figure A10. Predicted circadian activity patterns (activity ranges between 0 for inactivity and 1 for full-time activity) of female northern chamois in the National Game and Hunting Reserve of Les Bauges massif, in summer (15 June to 7 September 2004–2020), according to temperatures and human disturbance: (a) cold day and (b) hot day. In both (a) and (b), brown represents chamois living in the least exposed areas during weekdays of the school period; pink represents chamois living in the least exposed areas during weekdays of the summer break; green represents chamois living in the least exposed areas during weekends and public holidays; orange represents chamois living in the most exposed areas during weekdays of the school period; blue represents chamois living in the most exposed areas during weekdays of the summer break; purple represents chamois living in the most exposed areas during weekends and public holidays. Solid lines represent predicted values from the model and shaded areas around the curves represent 95% confidence intervals. Background shades represent the periods used to calculate the area under the curve for morning and evening crepuscules (grey), daytime (yellow) and night-time (blue). Time of day represents hours in Coordinated Universal Time (UTC).

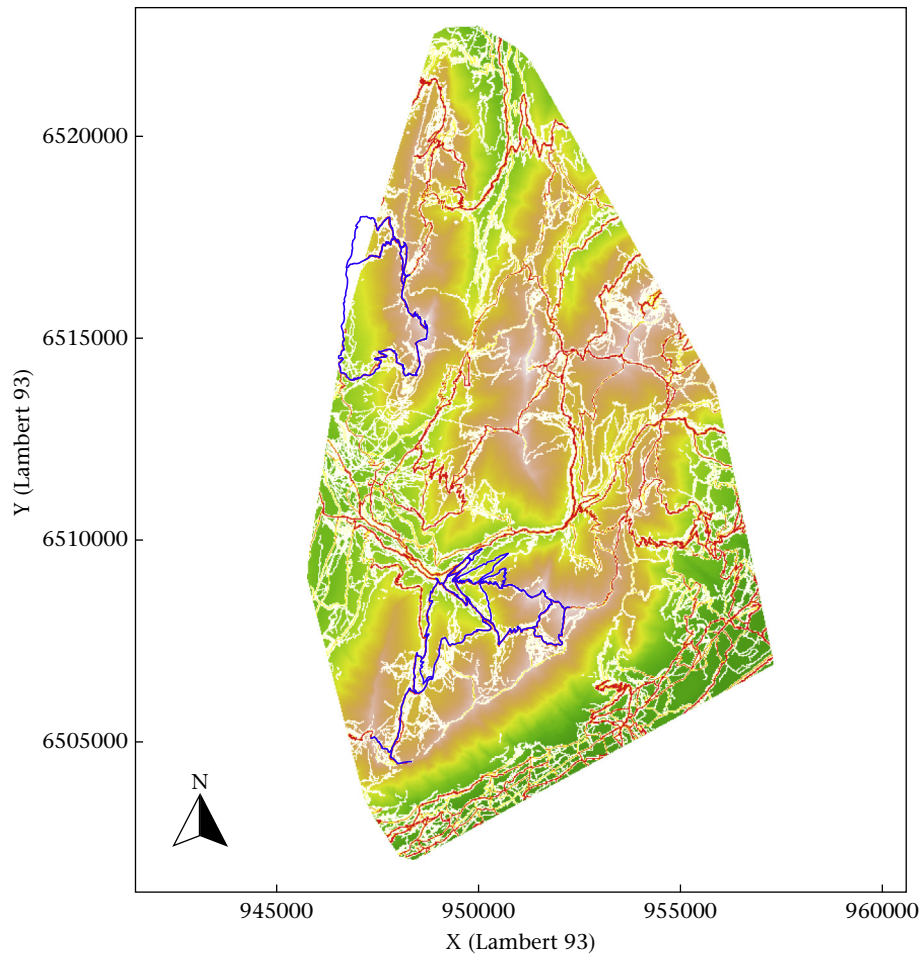


Figure A11. Comparison between human attendance assessed from hikers experimentally equipped with GPS in summer 2014 and 2015 (blue) and trail runners/hikers voluntarily uploading their GPS track on the Strava website (white - red gradient) in the National Game and Hunting Reserve of Les Bauges massif. Lambert 93: Lambert conformal conic projection, a conic map projection.

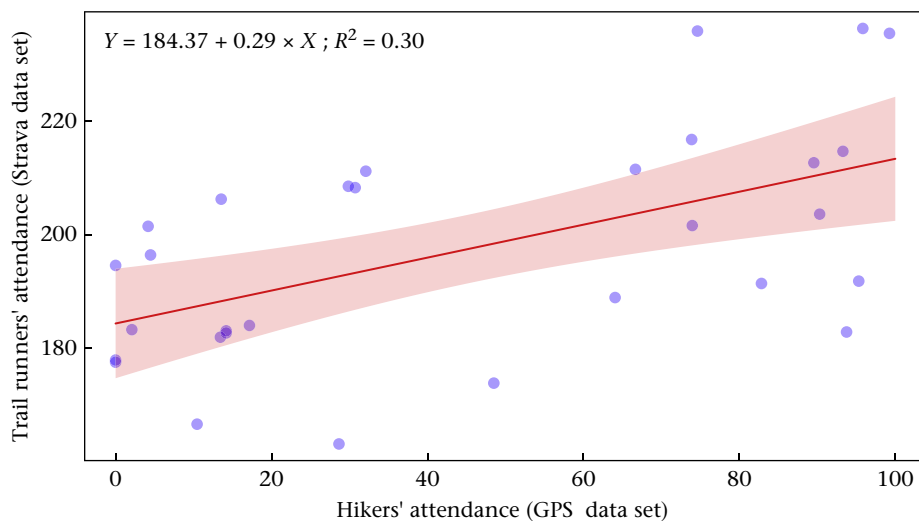


Figure A12. Comparison between human attendance assessed from hikers experimentally equipped with GPS trackers and from the Strava map in the National Game and Hunting Reserve of Les Bauges massif. Attendance levels assessed with the experimental design correspond to the proportion of use for each trail section, relative to each study site. Strava attendance levels correspond to the mean value of all the pixels of the Strava map located on a given trail segment of the map from the experimental design. The solid red line represents predicted values and the shaded area around it represents 95% confidence intervals.

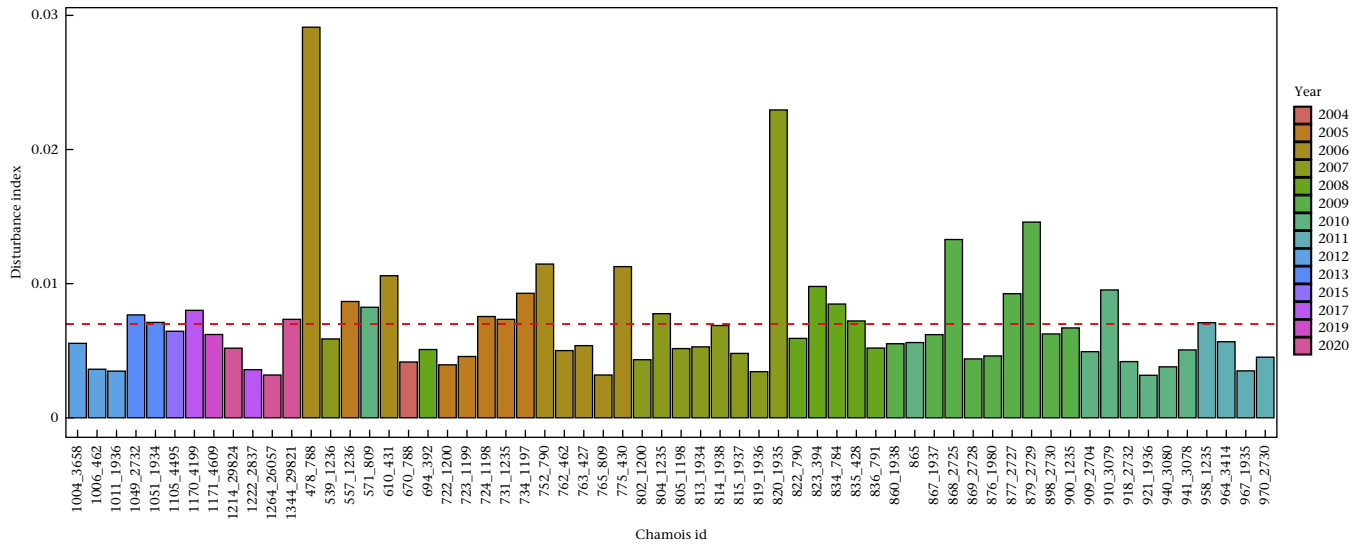


Figure A13. Spatial disturbance index per chamois home range for each year (the red horizontal dashed line corresponds to the median of the spatial disturbance index).

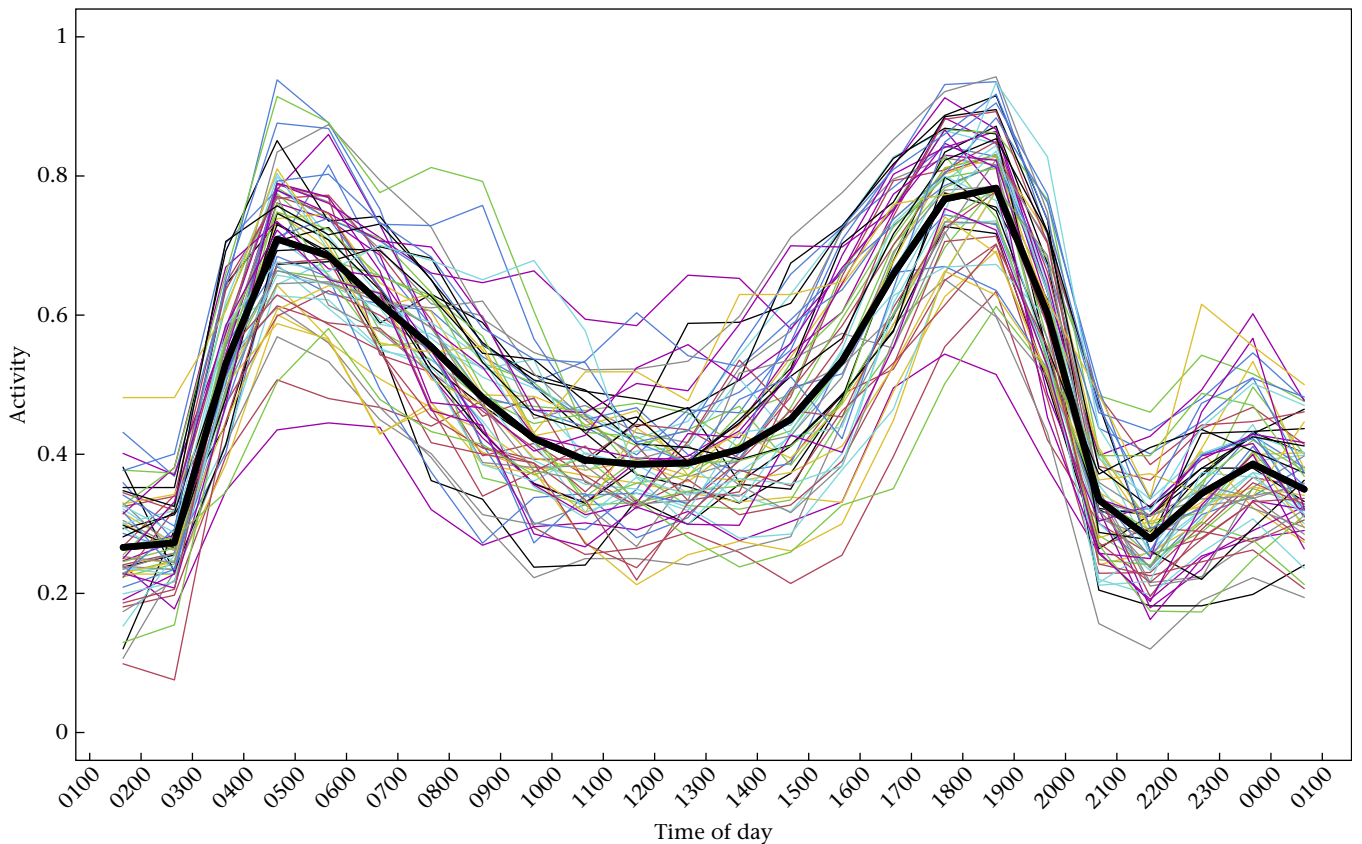


Figure A14. Mean hourly activity patterns (activity ranges between 0 for inactive and 1 for active) in summer for the northern chamois of the study (National Game and Hunting Reserve of Les Bauges massif, 15 June to 7 September 2004–2020). The mean activity probability for hour H was calculated from the 0/1 activity of the raw data ranging between H and $H+1$ for a given chamois, considering all days available for this individual. Coloured solid lines represent the individual curves ($N = 62$). The thick black dotted line represents the general mean considering all the chamois and days available. Time is in hours, Coordinated Universal Time (UTC).

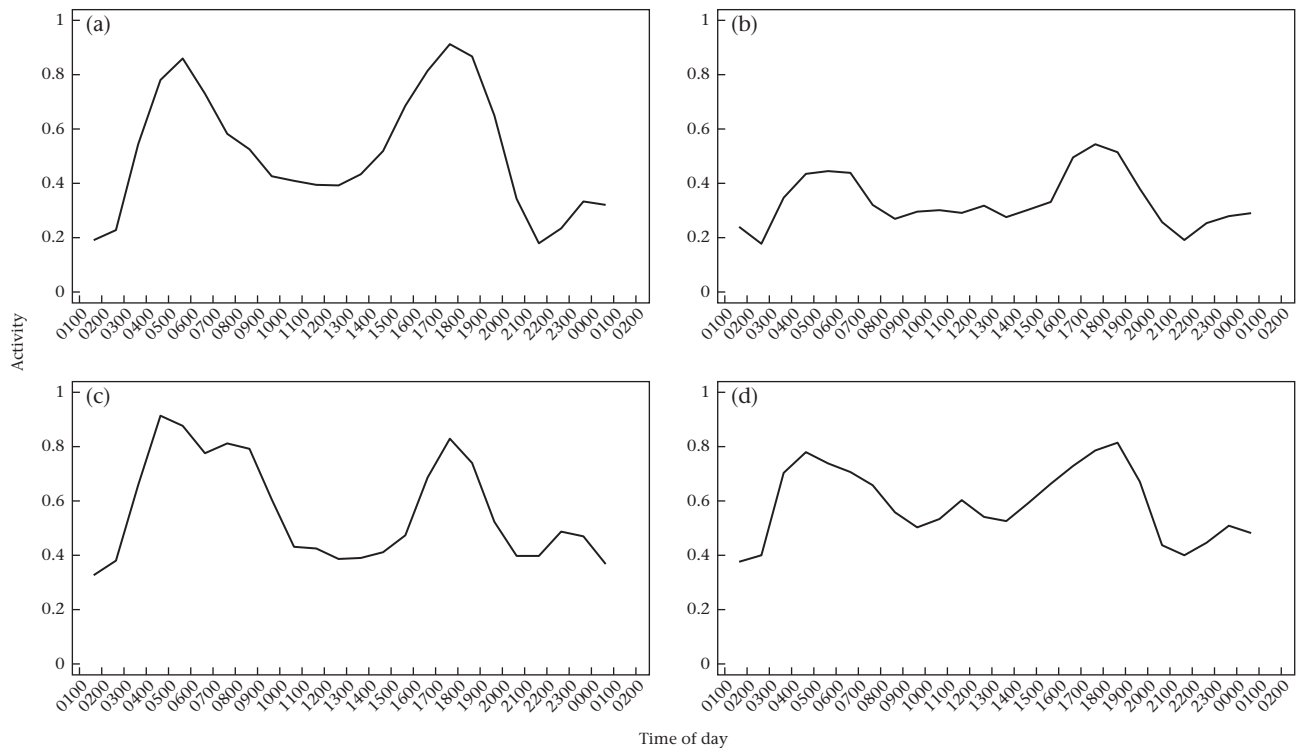


Figure A15. Mean hourly activity patterns (activity ranges between 0 for inactive and 1 for active) in summer for a selection of northern chamois in the National Game and Hunting Reserve of Les Bauges massif (15 June to 7 September 2004–2020); (a) chamois 752_790 exhibits an activity pattern close to the mean pattern; (b) chamois 805_1198 exhibits an activity pattern characterized by small peaks; (c) chamois 1222_2837 exhibits an activity pattern characterized by a long morning peak; (d) chamois 834_784 exhibits an activity pattern characterized by a small additional peak during daytime. The mean activity probability for hour H was calculated from the 0/1 activity of the raw data ranging between H and $H+1$, considering all days available for this individual. Time is in hours, Coordinated Universal Time (UTC).